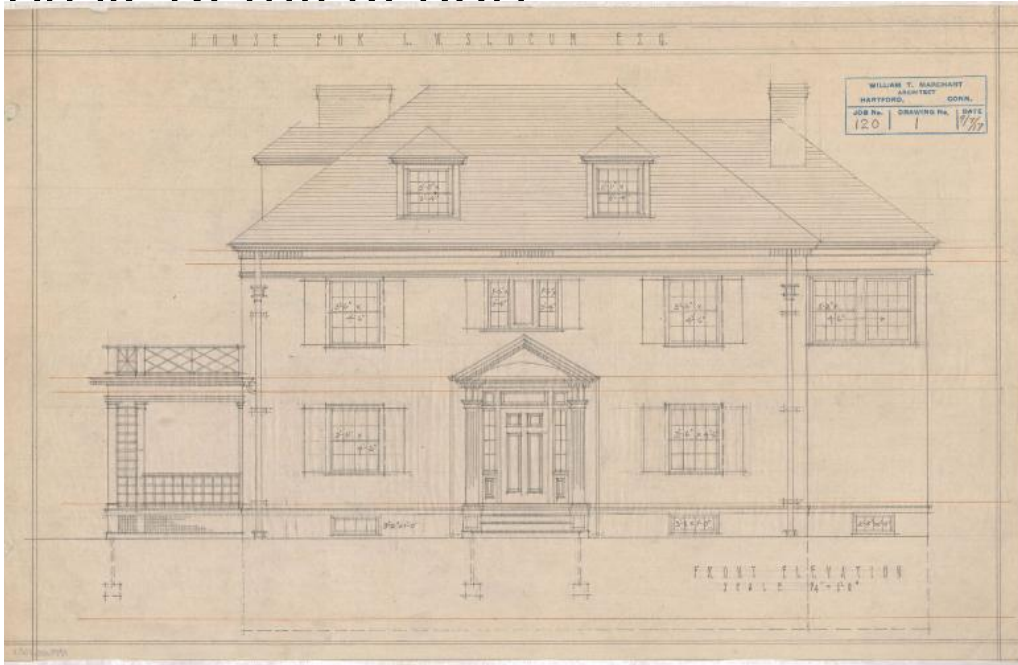


Basic Detail Report



Title House for L.W. Slocum, probably Hartford

Date 1917

Primary Maker William T. Marchant

Medium Architectural drawings, pencil and yellow ink on tracing paper.

Description Plans for a two and one-half story colonial revival house featuring a hipped roof with overhanging eaves, a tinned hipped roof dormer on the rear, and clipped gable dormers on the front attic elevations. A notable feature of the house is the front entry which includes an overhanging pedimented frontispiece with fluted pilasters supported by scroll sawn brackets, sidelights, a raised paneled door and transom bar with paneled molding details. Windows on the house are primarily louvered double-hung sash windows in either the eight-over-eight, or six-over-six configurations. Grouped casements windows are featured on the front, east, and west elevations. A total of eight drawings are included in the set; front, west, north, and south elevations, as well as cellar,

Basic Detail Report

first floor, second floor, and attic & roof plans. The cellar plans include a laundry room, range coal bin, cold room, clothes chute with hamper, toilet, heater coal bin, and heater. The first floor plans include a rear porch, kitchen, butler's pantry, dining room, rear passage, toilet, entry hall, entry porch, living room, and veranda. The second floor plans include three chambers (bedrooms), a bathroom, linen closet, hall, and balcony. The attic plans include a maid's room, bathroom, hall and storage.

Dimensions Primary Dimensions (height x width): 18 1/4 x 11 1/2in. (46.4 x 29.2 cm)