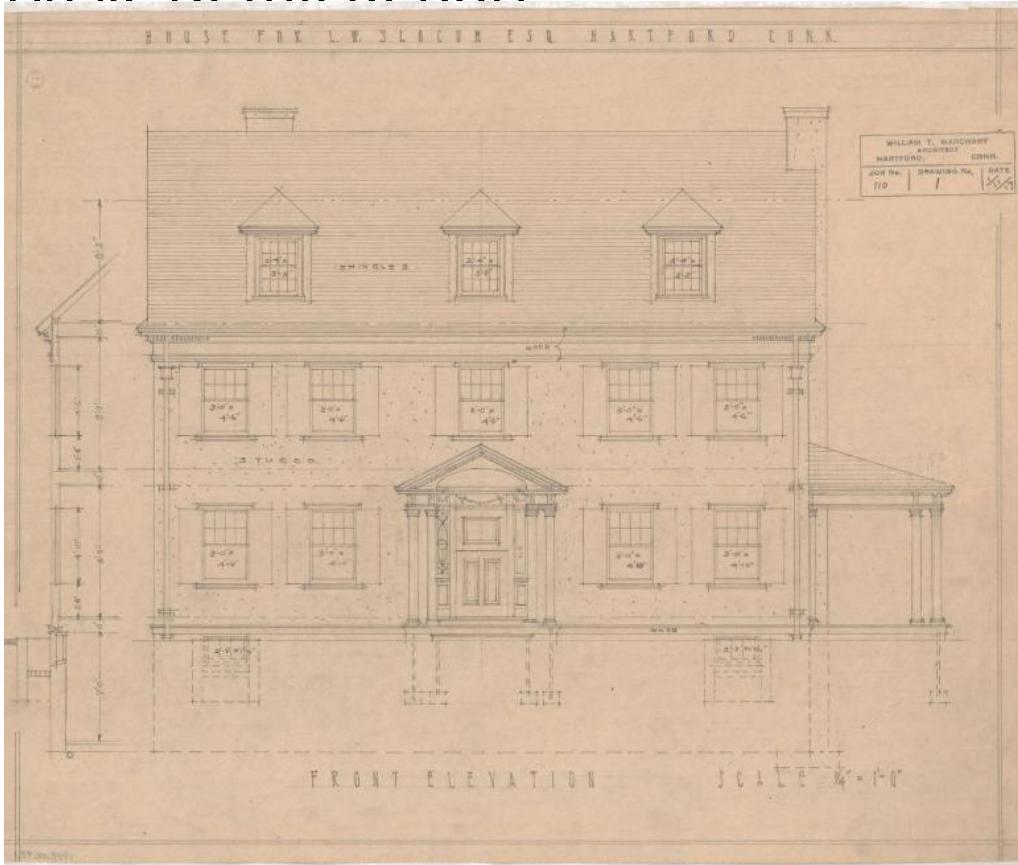


# Basic Detail Report



## Title House for L.W. Slocum, probably Hartford

Date 1917

Primary Maker William T. Marchant

Medium Architectural drawings, pencil on tracing paper.

Description Plans for a three story stucco over brick colonial revival house, featuring a shingled gable roof with overhanging eaves, and cross gable on the rear elevation. Notable features of the house include clipped gable dormer windows on the attic level, a third-story roof deck, and front entry with a romanised doric portico, a paneled front door, sidelights with leaded divider tracery, and a transom bar with carved garland details. Windows on the house are primarily louvered double-hung sash windows in either the eight-over-eight, eight-over-one, six-over-one, or four-over-one configurations. Large tri-part

# Basic Detail Report

windows can be found on the second floor level of the side and rear elevations.

Eight drawings are included in the set; front, rear, and two side elevations, as well as cellar, first floor, second floor, attic & roof plans. The cellar plans include a heater coal bin, heater, cold room, toilet, laundry room, and range coal bin.

The first floor plans include a veranda, living room, den, recessed entry porch, entry hall, rear passageway, toilet, rear porch, pantry, kitchen, butler's pantry and dining room. The second floor plans include three chambers (one with a fireplace), two bathrooms, a sleeping porch, linen closet and hall. The attic plans include: a chamber (bedroom), two maid's rooms, storage room, bathroom, hall, roof deck and tar closet.

Dimensions Primary Dimensions (height x width): 16 3/4 x 13 3/4in. (42.5 x 34.9 cm)