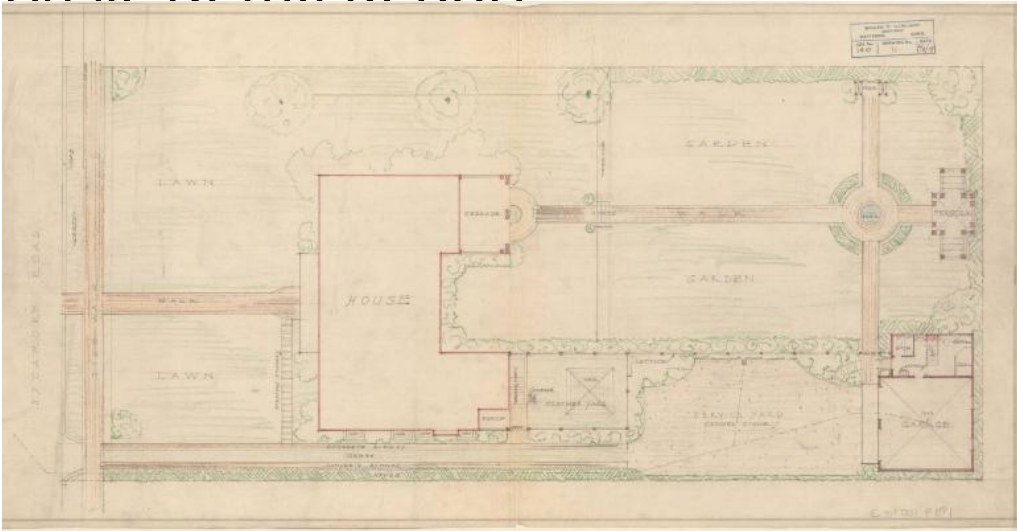


Basic Detail Report



Title For Colonel R.L. Goodman, Sycamore Road

Date 1917-1919

Primary Maker William T. Marchant

Medium Graphite, green, brown, red and blue colored pencil on trace paper.

Description Plans for garage for Colonel R.L. Goodman, Sycamore Road

includes: site plan, elevation of north side of house & garage, east elevation, north elevation, elevations of trellis/hedge, pergola, garage with lot lines, west elevation, south elevations, front elevation, section looking west, foundation plan, first floor plans, second floor plan. Set also includes two copies of specifications for construction of garage and blue prints of site plan and of planting plan.

Dimensions Primary Dimensions (image height x width): 36 1/8 x 15 7/8in. (91.8 x

40.3cm) Sheet (height x width): 37 7/8 x 17 5/8in. (96.2 x 44.8cm)