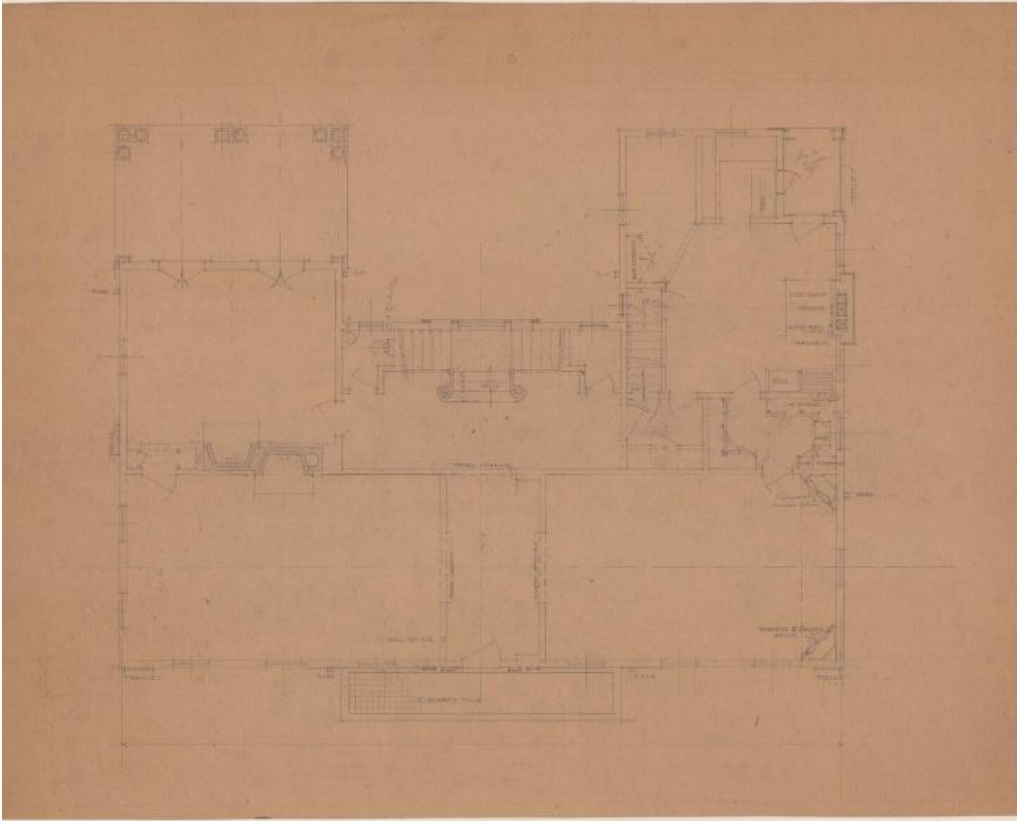


# Basic Detail Report



## **Title House for W.A. Sanborn, Esq.**

Date 1916-1917

Primary Maker William T. Marchant

Medium Blue colored pencil, red and yellow ink and graphite on waxed linen and paper.

Description Plans for a house for W.A. Sanborn Esq. by William T. Marchant.

Dwelling has four stories, including basement and attic. Includes: full side details of hall and stair - hall trim, details of kitchen and butler's pantries, supplement to second floor plan, bill of doors, sketch of supplement to second floor plan, detail of hall, detail of stair hall, interior details, front elevation and two design options/sketches, detail of south chimney and south elevation, west elevation, north elevation, cellar plan, attic and roof plan, second floor plan, first

# Basic Detail Report

floor plan and design sketch, sketch of first floor plan, detail of front entrance

door, veranda enclosure plan and elevations, first and second floor plan

sketches, detail of blinds.

Dimensions Primary Dimensions (image height x width): 17 3/8 x 23 1/4in. (44.1 x

59.1cm) Sheet (height x width): 18 1/8 x 23 5/8in. (46 x 60cm)