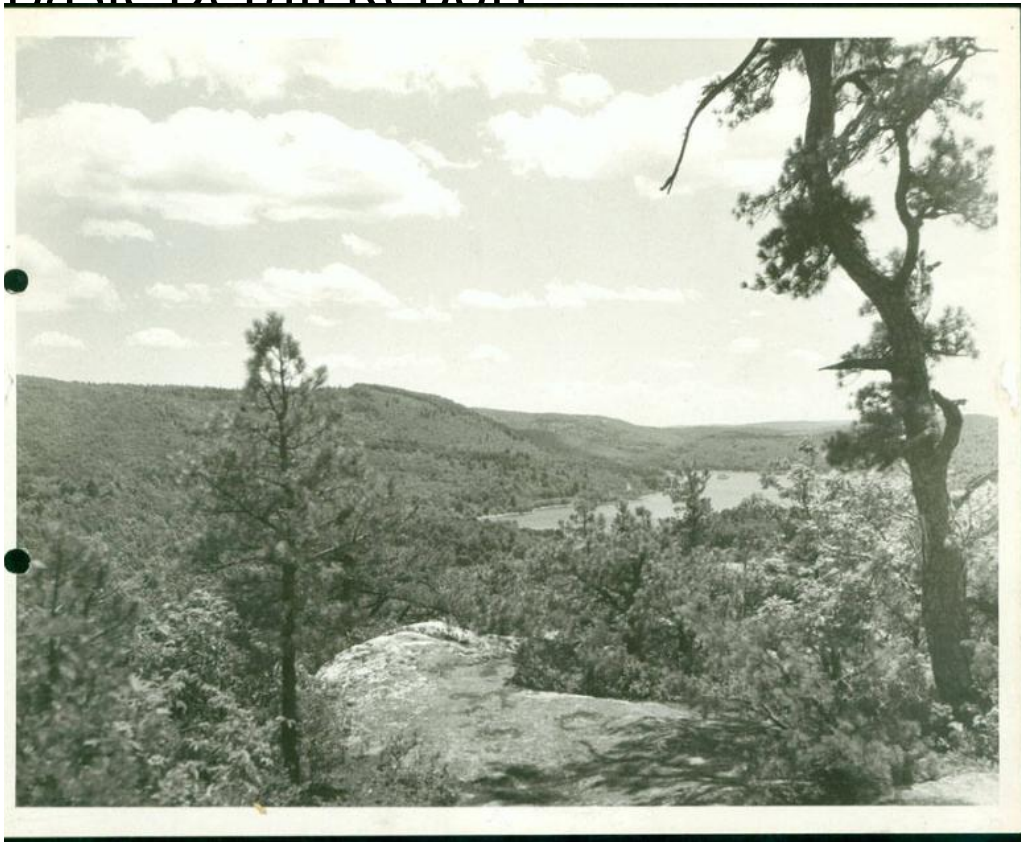


Basic Detail Report



Title View of Compensating Reservoir, Barkhamsted or New Hartford

Date 1932

Primary Maker Unknown

Medium Photography; gelatin silver print on paper

Description A rocky ledge and pine trees are in the foreground. A large body of water with one small island visible in it is in the background. Dense forests cover the surrounding hills.

Dimensions Primary Dimensions (image height x width): 7 1/2 x 9 3/8in. (19.1 x 23.8cm) Sheet (height x width): 8 x 10in. (20.3 x 25.4cm)