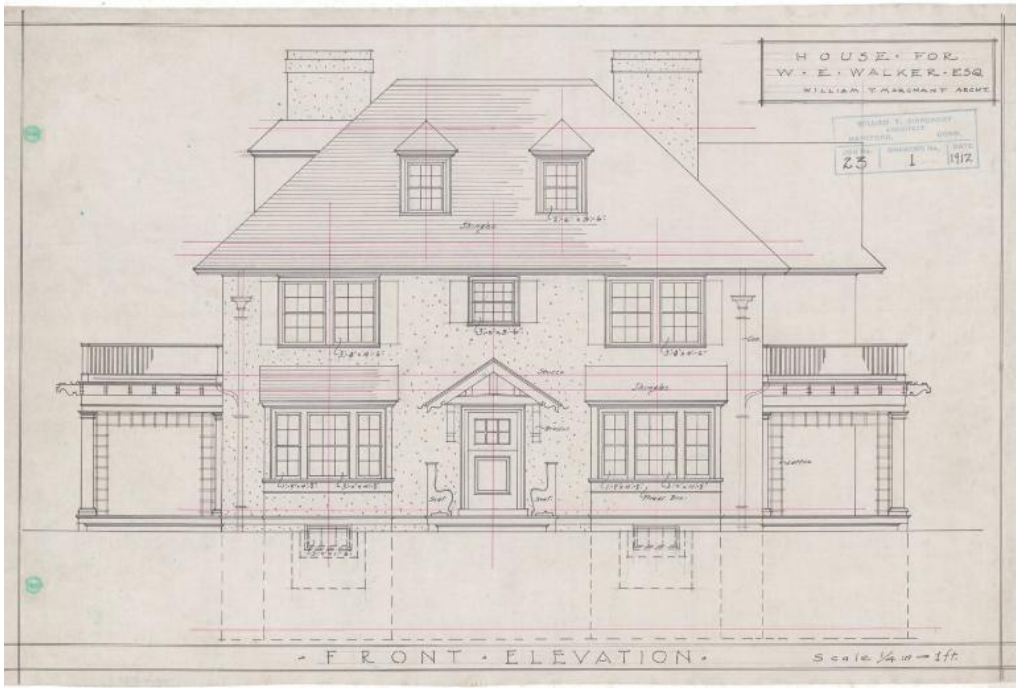


Basic Detail Report



Title House for W.E. Walker, Esq., probably Hartford

Date 1912

Primary Maker William T. Marchant

Medium Architectural drawings; pencil, black, red ink on linen paper

Description Plans for a three story stucco over brick Colonial Revival styled house, featuring projecting eaves, and a shingled hipped roof, with intersecting gables on the east and north elevations. Features of the house include hipped dormer windows on the attic level, squared bays set with tri-part windows and flower boxes on the front elevation, and a bracketed gable over the entryway door. Notable unique features include benches outside the front entryway, and scroll-sawn bracket details along the corner edges of the second floor deck. The windows of the house are primarily louvered double-hung sash windows, in either the eight-over-eight, six-over-six, or four-over-four configuration. Other windows are large tri-part windows on the front and north elevations, as well as

Basic Detail Report

a roundel window on the attic level north gable. Eight drawings are included in the set; front, east, west and north elevations, as well as cellar, first floor, second floor, and attic plans. The cellar plans include a laundry and cold room. The first floor plans include a rear side porch, pantry, veranda, kitchen, dining room, coat room, stair hall, entry porch, and living room with large veranda. The second floor plans include three chambers, two porches (over the first floor verandas), a bath, and large second story landing at the stairs. The attic plans include: unfinished space, hall, bath, and a maid's room.

Dimensions Primary Dimensions: 18 1/2 x 12in. (47 x 30.5cm)