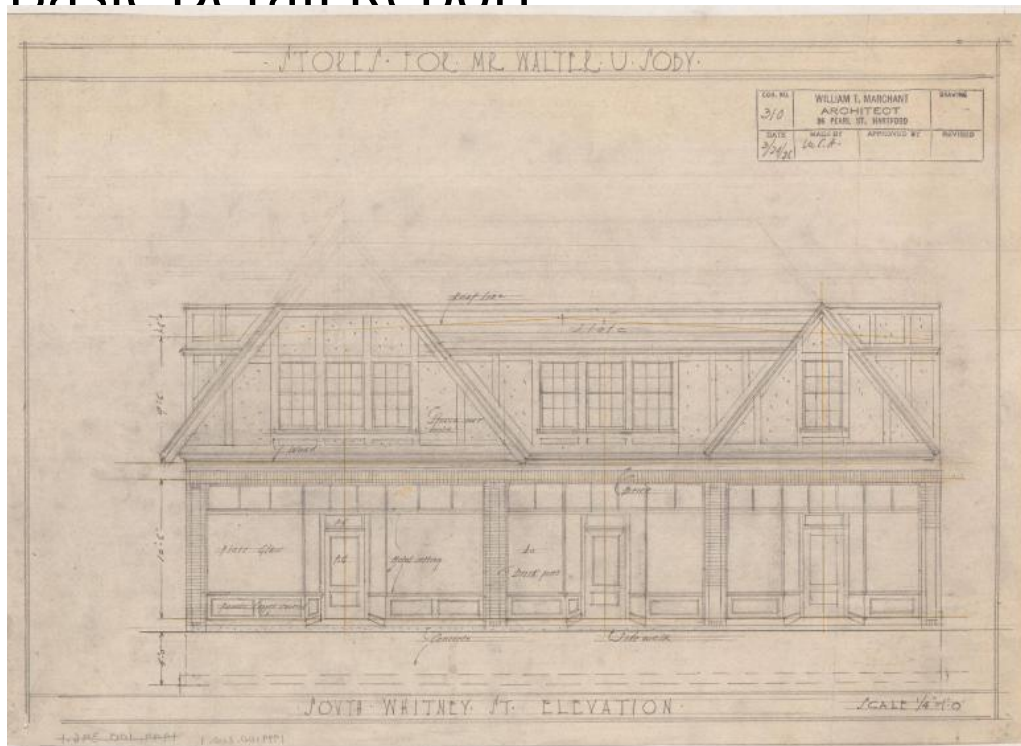


Basic Detail Report



Title Stores for Mr. Walter U. Soby , South Whitney Street, Hartford

Date 1924

Primary Maker William T. Marchant

Medium Drawing; pencil on tracing paper, some with orange dimensional lines.

Description Plans are for a two-story store with Tudor elements. The building has a parapet, slate roof, and flat gauged arches over most windows. The materials that make up the facade of are stucco, brick, and half-timbering. The drawings include all elevations, a transverse section, and floor plans for the cellar / foundation, first and second floors, and the roof. The cellar is one large room with a coal chute. Included on the first floor are three separate stores, a toilet, closet, one store room, and two vestibules. The second floor consists of a large work room, and a toilet.

Dimensions Sheet (height x width): 28 1/2 x 25in. (72.4 x 63.5cm) or smaller