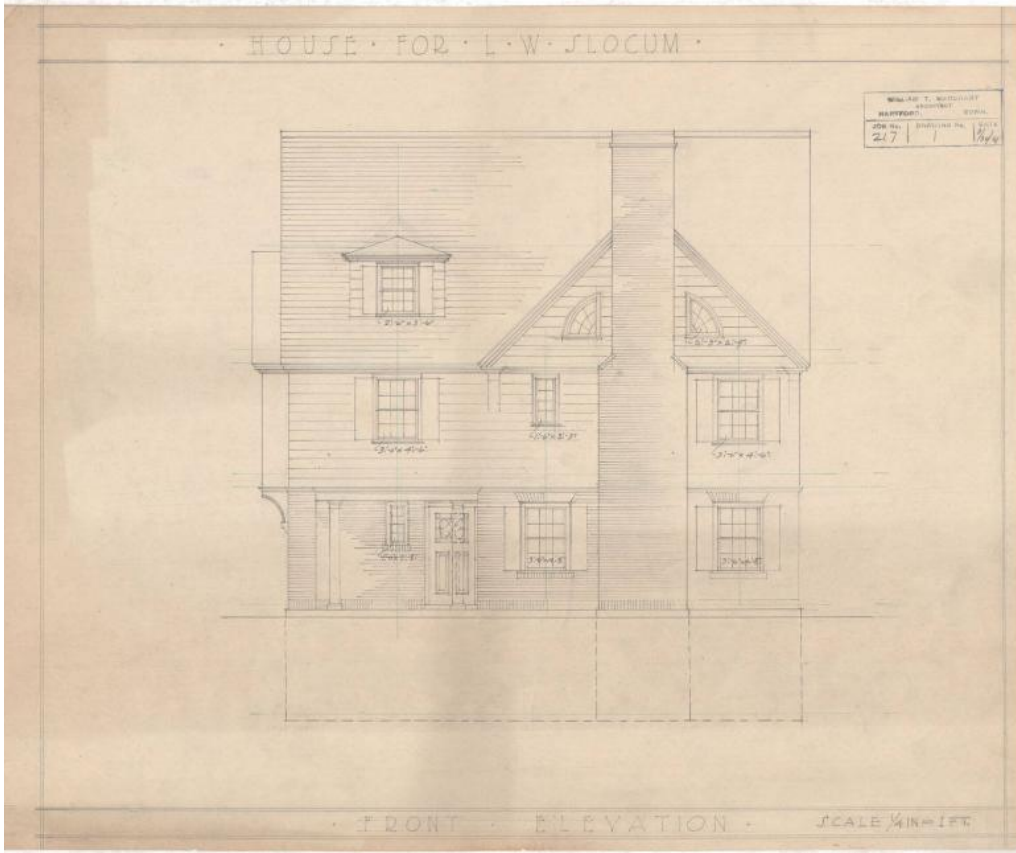


# Basic Detail Report



## Title House for L.W. Slocum, probably Hartford

Date 1921

Primary Maker William T. Marchant

Medium Architectural drawings; pencil and blue ink on tracing paper

Description Plans for a three-story Colonial Revival house featuring a complex gable roof with overhanging eaves, hipped dormer windows, entry loggia with doric columns, an enclosed rear porch, and splayed lipped lintels on the first-story windows. A notable feature of the house is the complex roof structure, primarily a gable roof on the north and south elevations, the front elevation also features a cross gable on the third story which transitions to a hipped roof on the rear elevation ending in the second story dormer window. On the second and third stories of the south elevation a small offset gabled bay with decorative

# Basic Detail Report

scroll bracket supports is also to be found. Windows on the house are primarily

louvered double-hung sash windows in the six-over-six or four-over-four

configuration. Other featured windows include an arched double-hung sash

window as well as grouped windows on the north elevation, quarter-round

lunette windows on the front elevation, and a roundel window on the rear

elevation. Eight drawings are included in the set: front, rear, north and south

elevations, as well as cellar, first floor, second floor, and attic roof plans. The

cellar plans include a laundry room, coal room, heater, cold room, and W.C.

(toilet). The first floor plans include a rear porch, kitchen, pantry, butler's pantry,

hall, living room, dining room, toilet, and entry porch. The second floor plans

include four chambers (bedrooms), two baths, and hall. The attic roof plans

include: two maids' rooms, two storage rooms, and a bath.

Dimensions Primary Dimensions: 17 3/4 x 15 1/2in. (45.1 x 39.4cm)