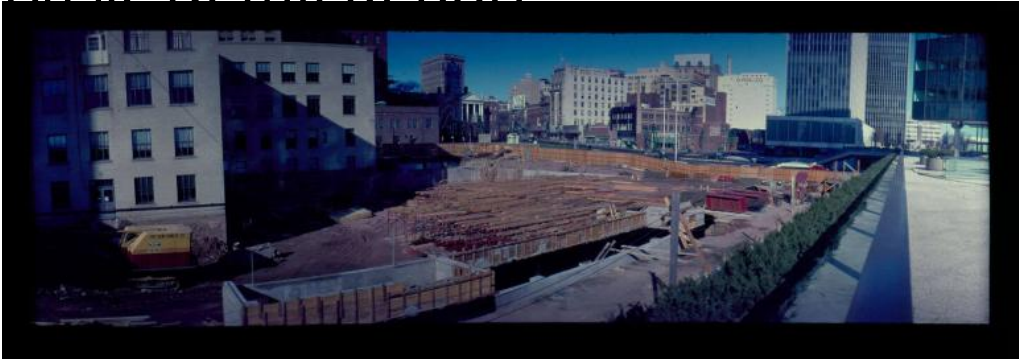


# Basic Detail Report



**Title H.S.B.I. & I. Co addition from Phoenix Mutual Life Ins Co Plaza,  
Hartford, Nov 25, 1963**

Date 1963

Primary Maker Theodore Newcomb

Medium Photography; color transparency in cardboard mount

Description Construction has begun in area adjoining Constitution Plaza. The plaza surrounding the Phoenix Mutual Life Insurance Company is at the right. State Street and the Old State House are visible in the background.

Dimensions Mount (height x width): 8 5/8 x 10 15/16in. (21.9 x 27.8cm)