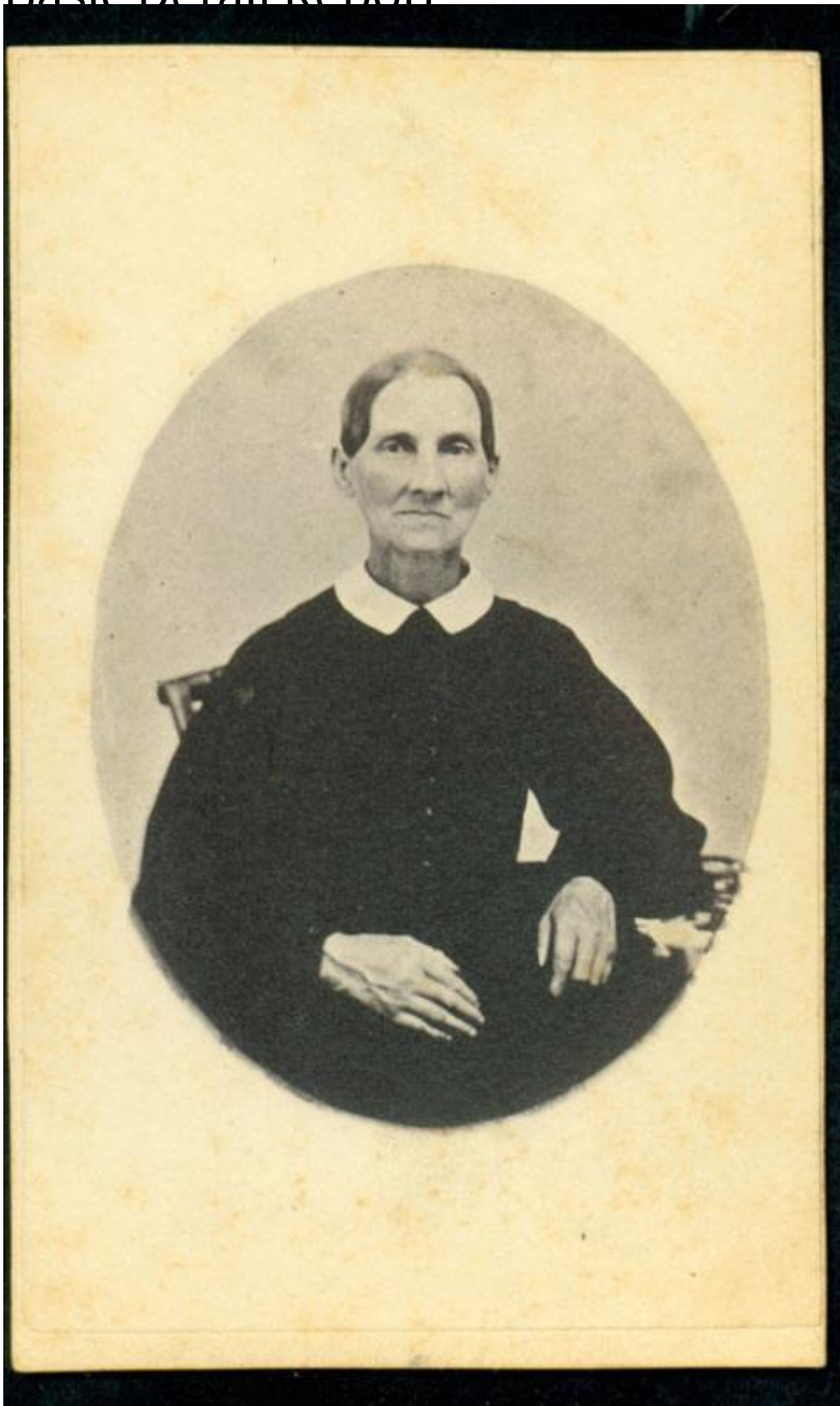


Basic Detail Report



Title Olive M. Sharpe

Basic Detail Report

Date about 1865

Primary Maker George L. Partridge

Medium Photography; albumen print on paper on cardboard carte-de-visite mount

Description Half-length portrait of an elderly woman seated in a chair. She is wearing a long-sleeved dress with a white collar.

Dimensions Primary Dimensions (image height x width): 2 1/2 x 1 15/16in. (6.4 x 4.9cm) Sheet (height x width): 2 1/2 x 1 15/16in. (6.4 x 4.9cm) Mount (height x width): 3 3/4 x 2 1/4in. (9.5 x 5.7cm)