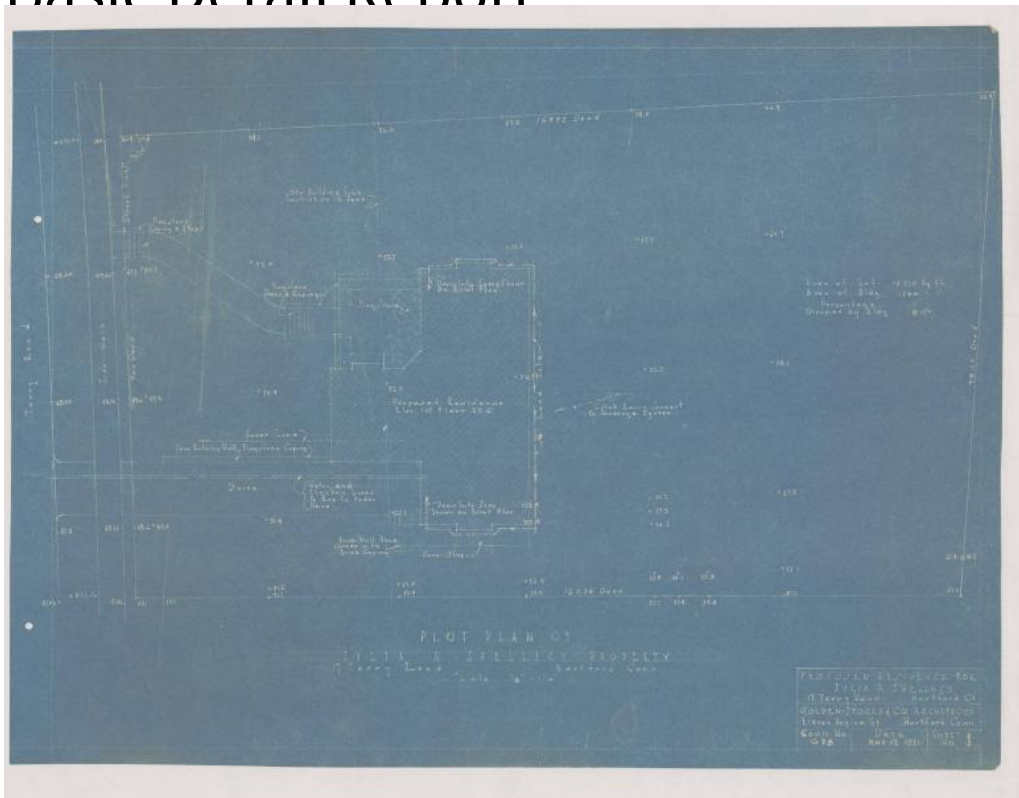


Basic Detail Report



Title Residence for Julia A. Spellacy, 17 Terry Road, Hartford, Conn.

Date 1931

Primary Maker Golden Storrs & Co.

Medium Blueprints; cyanotype on paper; pencil on paper.

Description Plans for a two-story Colonial Revival house with an attic and basement. The walls are brick; the slate roof has three chimneys. Blueprints include all four elevations, and floor plans for the basement, first, and second floors. The basement has five rooms in it, but they are not designated for a specific purpose. Included on the first floor are a terrace, living room, hall, dining room, butler's pantry, kitchen, den, pantry, porch, toilet, two closets, and one staircase. The second level includes three chambers (bedrooms), a hall, five closets, and two bathrooms. An additional drawing appears to be a sketch of the foundation.

Basic Detail Report

Dimensions Primary Dimensions (height x width): 18 3/4 x 24 1/8in. (47.6 x 61.3

cm)