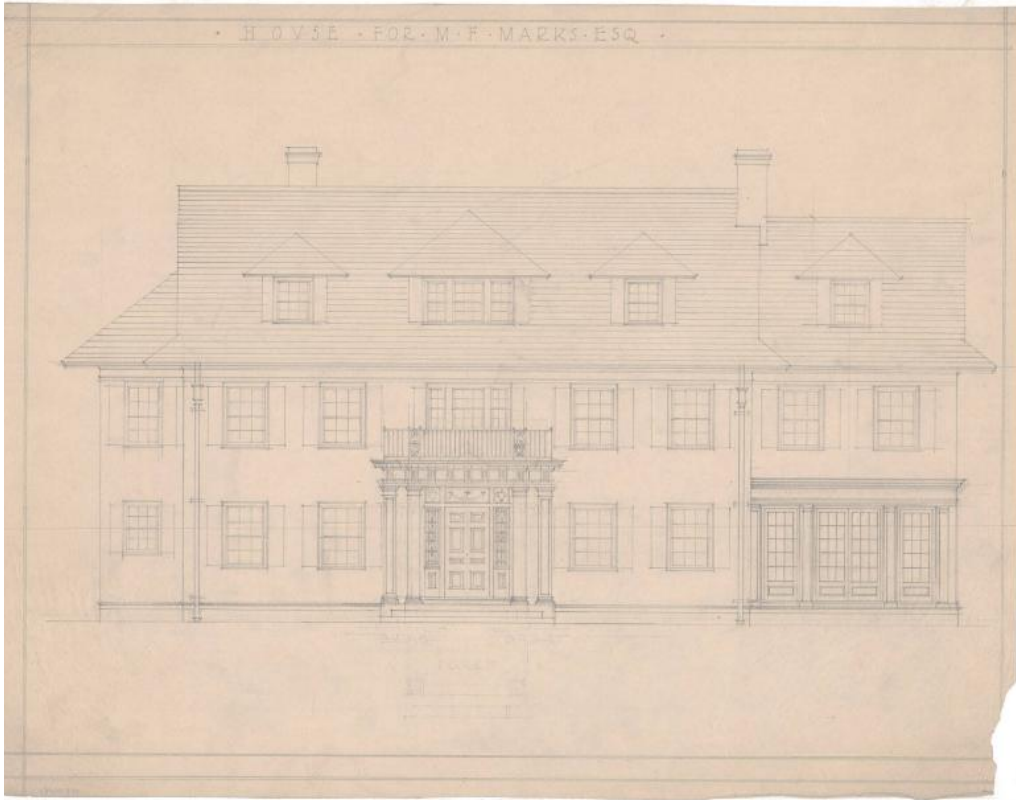


Basic Detail Report



Title House for M. F. Marks, 250 Whitney Street, Hartford

Date 1917

Primary Maker William T. Marchant

Medium Architectural drawings, pencil on paper

Description Plans for a two and one-half story Colonial Revival house, with a detached garage and clothes yard. The house has a hipped roof with oversized dormer windows on the attic level. The windows are primarily six-over-six double hung sash windows with shutters. The front facade prominently features a large balconied stepped entry portico supported by doric columns. Cellar plans include; a laundry room, cord and kindling wood rooms, toilet, cold room, heater and heater coal rooms. First floor plans include; a sun parlor, living room, entry porch, entry hall, den, toilet, rear porch, side porch, maids alcove, kitchen, butler's pantry and dining room. Second floor plans include; a boudoir,

Basic Detail Report

four chambers, two bath rooms, rear balcony, sleeping porch, closets and

hallways. The attic plans include; a chamber, three maid's rooms, two storage

rooms, a bathroom, and hallway. The plans for the clapboard-sided garage

include; a foundation plan, roof plan, elevations and a first floor plan which

shows the coal and heater room, lavatory, work room, and garage space. The

attached clothes yard plan shows elevations and the lattice enclosure details.

Total set of drawings also includes; elevations, exterior details and floor plans

with alterations throughout the design process. Interior design sheets show

elevations, details, and plans for storage rooms, kitchen, butler pantry, closets,

heat registers, blinds, garage work room, living room, and individual cellar

rooms.

Dimensions Primary Dimensions: 20 x 15 1/2in. (50.8 x 39.4cm)