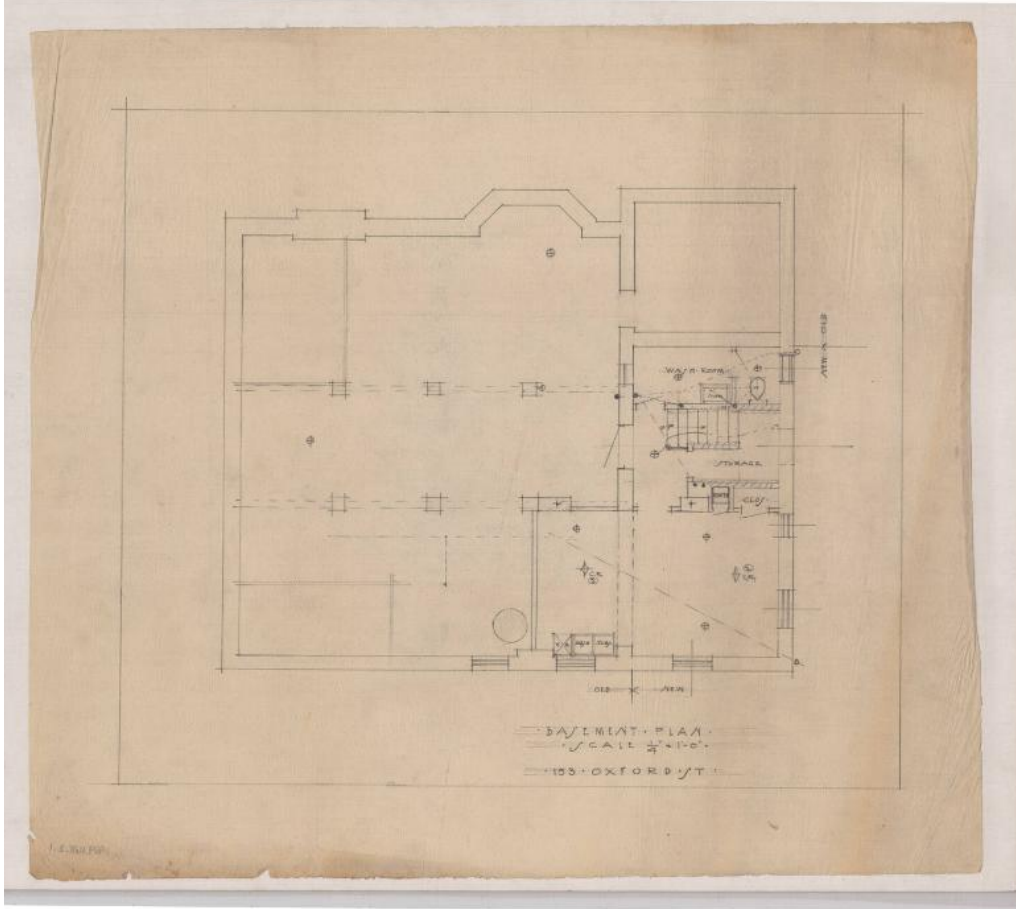


# Basic Detail Report



**Title Alterations to Residence of Mr. Guy Beardsey, 153 Oxford St.**

**Hartford**

Date after 1915

Primary Maker Cortlandt F. Luce

Medium Drawings; pencil on tracing paper.

Description Plans include alterations to basement, first and second floors, and basement of garage, as well as the South Elevation. A washroom, storage, and second "C.R." were built. Changes to the first floor include a larger alcove, a new kitchen, pantry, porch, lavatory, and stairwell. Added to the second floor were a

# Basic Detail Report

new sleeping porch, stairwell, a bathroom, one closet; the old attic stairs were removed. The basement of the garage was modified into, a garage space, coal storage, another storage area, laundry, a possible playroom, and stairs.

Dimensions Primary Dimensions (height x width ): 18 5/8 x 25 1/8in. (47.3 x 63.8 cm)