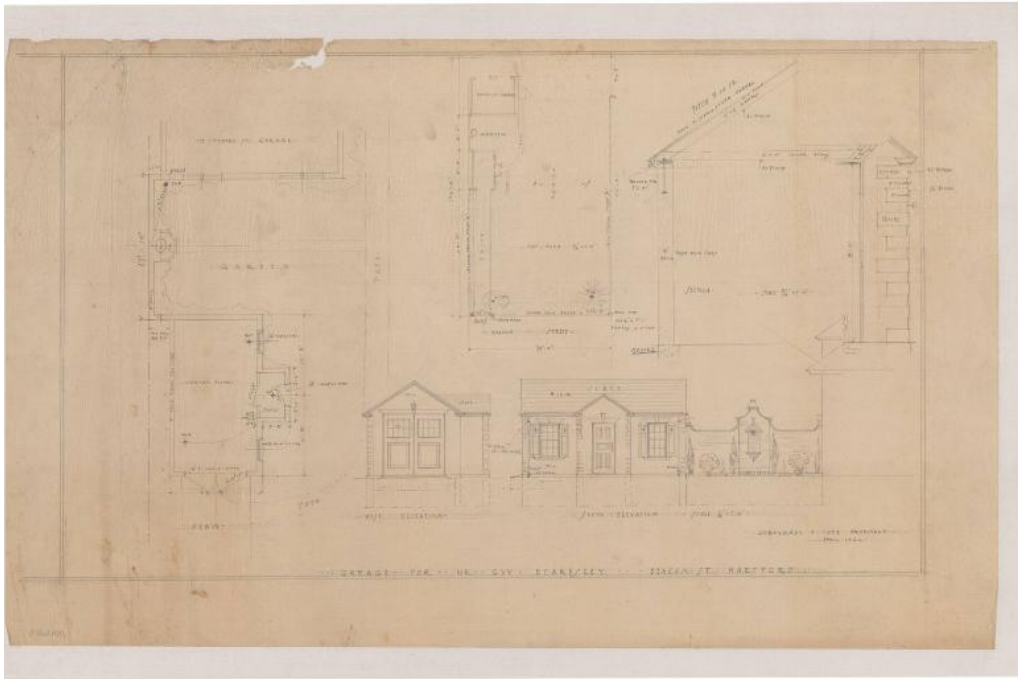


Basic Detail Report



Title Garage for Mr. Guy Beardsley, 153 Oxford St., Hartford

Date 1926

Primary Maker Cortlandt F. Luce

Medium Drawing; pencil on tracing paper.

Description Site plan of a property between Oxford Street and Beacon Street with plan and elevations of a garage on Beacon Street. A garage and office on Oxford Street are separated from the second garage on Beacon Street by a garden. A wall with a fountain runs along the property line. The second building has a large open area for vehicles and a small tool room. It has brick walls and a slate roof.

Dimensions Primary Dimensions (height x width): 20 1/4 x 32 3/8in. (51.4 x 82.2 cm)