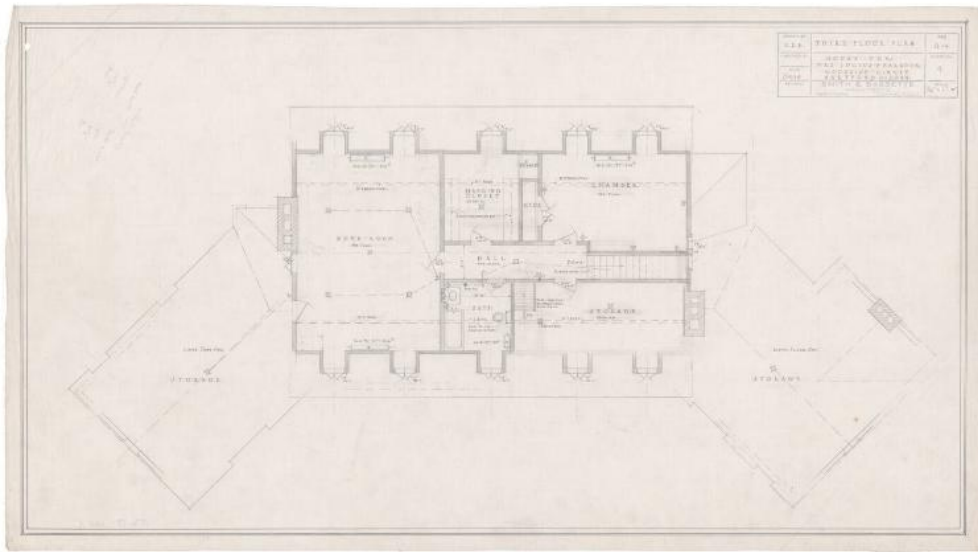


Basic Detail Report



Title House for Mrs Lucius Barbour, 2 Woodside Circle, Hartford, Conn.

Date 1924

Primary Maker Smith & Bassette

Medium Drawings; pencil, red and black ink on paper

Description Plans for a three-story Tudor Revival house with cellar and garage.

The walls are slate, brick, and stucco with half-timbering. A diamond-pane casement window is on the second floor. The roof has slate shingles, as well as dormers, and three chimneys. The foundation plan is mostly comprised of empty space, but it includes a laundry room, toilet, closet, and store room. The first floor has a sun room, flower room, living room, hall, dining room, library, a butler's pantry, alcove, kitchen, two closets, one toilet, two staircases, a "refrig F. B.O.," two vestibules, and three porches. A wall fountain was in the sun room and the floors in all rooms are either slate or oak. Included on the second floor are four chambers (bedrooms), three servants' rooms, four baths, a landing, hall, two stairwells, a linen closet, and fourteen other closets. All rooms except for the

Basic Detail Report

servants' wing have oak flooring, the rest are pine. The third floor includes three storage rooms, a book room, hanging closet, chamber, hall, and bath. Included in the garage is an area large enough for three cars, a tool room, and a closet.

Dimensions Primary Dimensions (height x width): 17 3/4 x 32 1/4in. (45.1 x 81.9 cm)