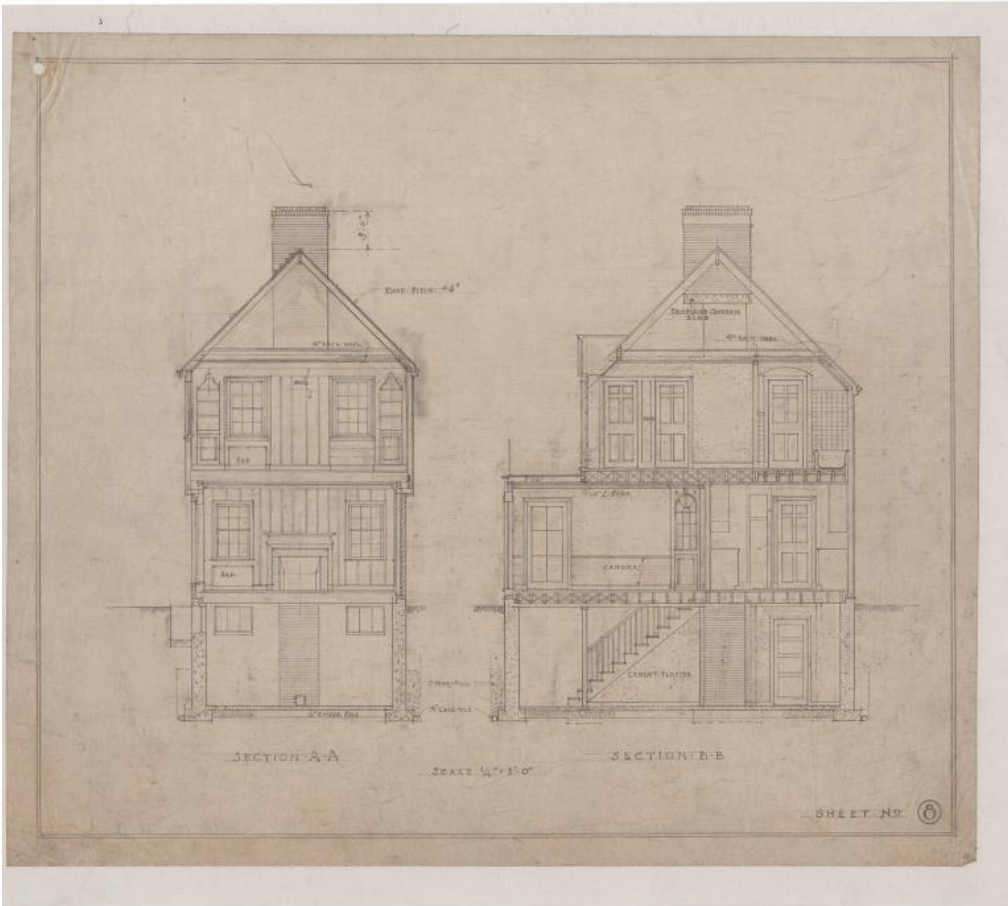


Basic Detail Report



Title House for William H. Putnam, Walbridge Road, West Hartford

Date 1945

Primary Maker Roy Donald Bassette Sr.

Medium Drawings; pencil and black ink on tracing and linen paper.

Description Plans for a two-story eclectic colonial revival house. The facade of the home is clapboard and stucco. It also has decorative molded iron over a few windows, a copper roof over the garage, two chimneys, and a shingle roof. The plans are of the north, east, south, front, elevations, plot plan, transverse section, and floor plans including the first second, and foundation levels. The foundation has a preserve closet, toilet, and sections that are unexcavated. Included in the first floor are a porch, kitchen, dining room, hall, living room,

Basic Detail Report

vestibule, powder room, coat closet, and garage. All interior rooms on the first

level have either linoleum or oak flooring. Three chambers (bedrooms), a hall,

two bathrooms, a linen closet, four other closets, two wardrobes, and one porch

make up the second floor.

Dimensions Height x Width: 15 1/2 in x 17 3/4in (39.4cm x 45.1cm)