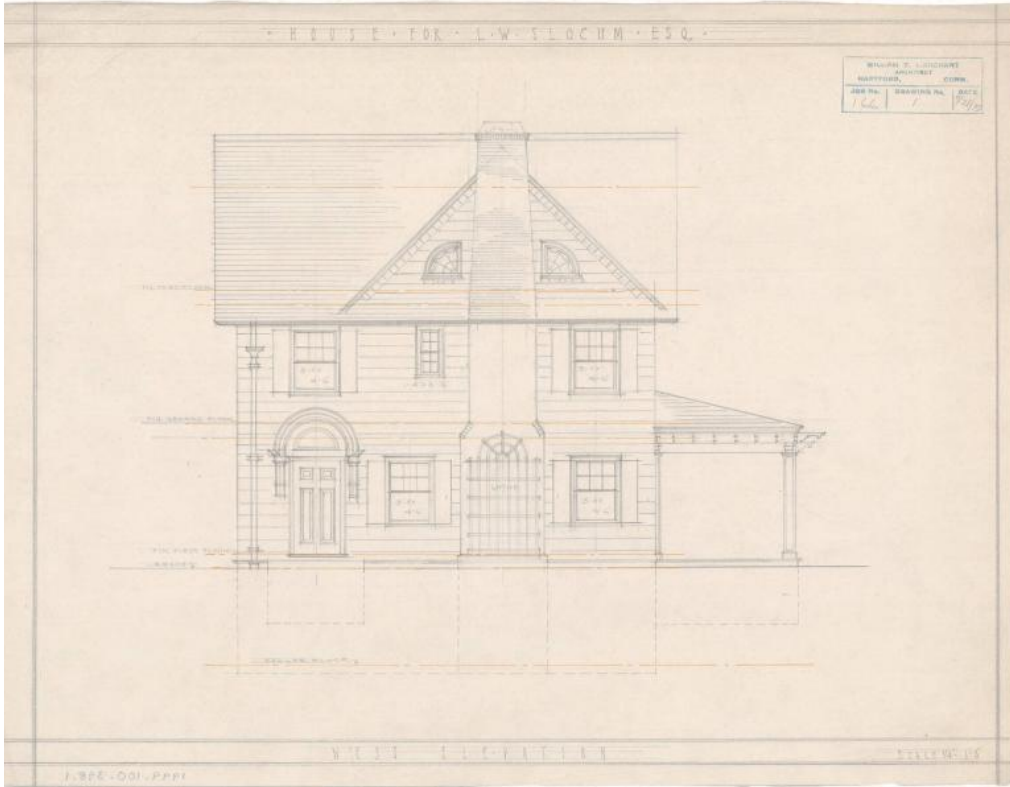


# Basic Detail Report



**Title House for L W Slocum Esq.,10 Walbridge Rd, West Hartford, Conn.**

Date 1919

Primary Maker William T. Marchant

Medium Drawings; pencil on tracing paper, with some orange dimensional lines

Description Plans for a three-story house with a cellar. The house has a pitched roof and two chimneys; the chimney on the west side of the house has latticework. The west side of the house also includes a column and a doorway with a half lunette window above it. A porch extends off the south side of the house. The plans include north, south, east, and west elevations, as well as floor plans for the cellar, first floor, second floor, and third floor. The cellar has a cold room, a coal room, and a laundry room. The first floor of the house has a large living room and dining room, and also includes a butler's pantry, a kitchen, and a porch. On the second floor there are four chambers (bedrooms), several

# Basic Detail Report

closets, two baths, and a sleeping porch. The third floor plans show two chambers (bedrooms), two unfinished rooms, and a bathroom.

Dimensions Primary Dimensions: 18 1/2 x 14in. (47 x 35.6cm)