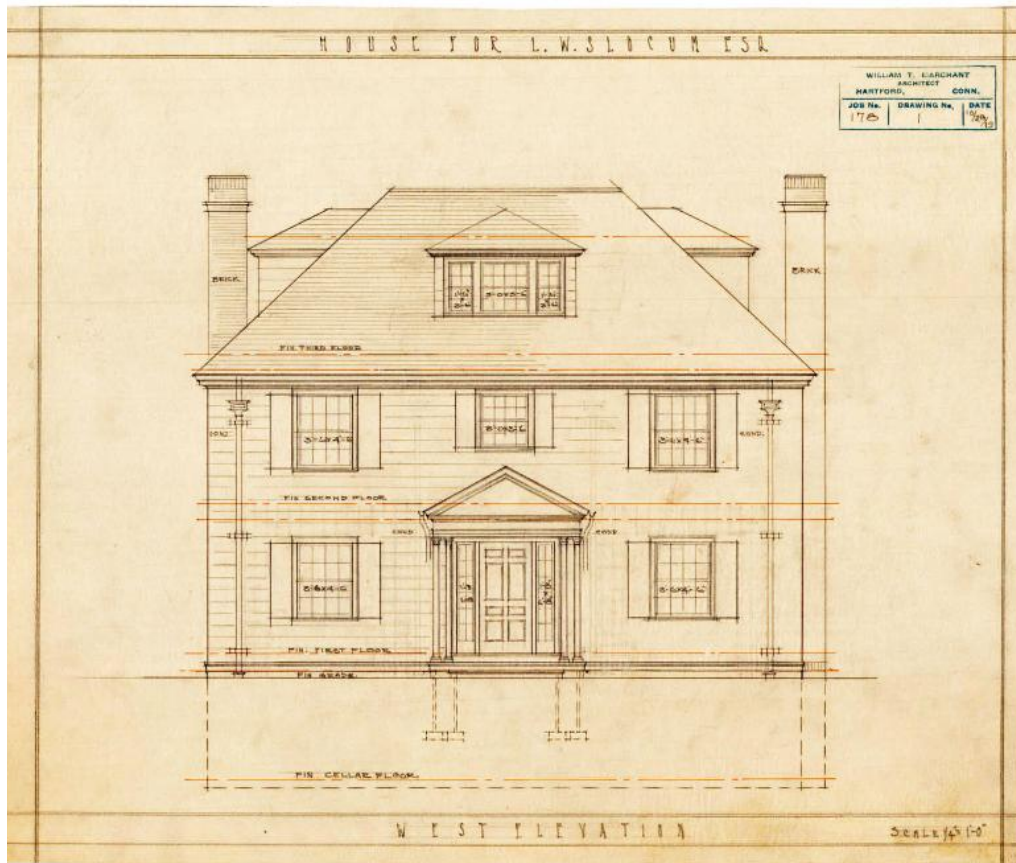


Basic Detail Report



Title House for L.W. Slocum, 8 Walbridge Rd., West Hartford

Date 1919

Primary Maker William T. Marchant

Medium Architectural drawings; pencil on paper

Description Architectural plans for a two and a half story Colonial Revival frame house with hipped roof and dormers. It is sheathed with horizontal board siding. Brick chimneys on the end walls. The front-facing dormer has a tripartite window consisting of a single 8/8 double-hung sash flanked by 4/4 double-hung sash. The dormers on the side (north and south) elevations have paired 6/6 double-hung sash and the shed dormer on the rear (east) elevation has a single 6/6 double-hung window. The home's remaining fenestration is a mix of 8/8 and 6/6 double-hung sash. There is a recessed corner porch at the southeast corner of

Basic Detail Report

the home and a partial-width, one-story, partially-enclosed entry porch with

hipped roof and Doric support at the northeast corner. The pedimented portico

has a wide entablature and clustered Doric supports. Multi-pane sidelights flank

the entry. Eight drawings are included in the set; north, south, east, and west

elevations, as well as cellar, first floor, second floor, and combined attic and roof

plans. Basement plans include laundry, range coal, heater coal, toilet, and cold

rooms. First floor plans indicate the entry porch, front hall, living and dining

rooms, butler's pantry, kitchen, rear hall, laboratory, closets, veranda, and rear

porch. The second floor has four chambers, two bathrooms, a central hall, and

several closets. The third floor plan includes two chambers, a bathroom, central

hall, closets, and attic storage areas.

Dimensions Primary Dimensions (height x width): 14 x 17in. (35.6 x 43.2cm)