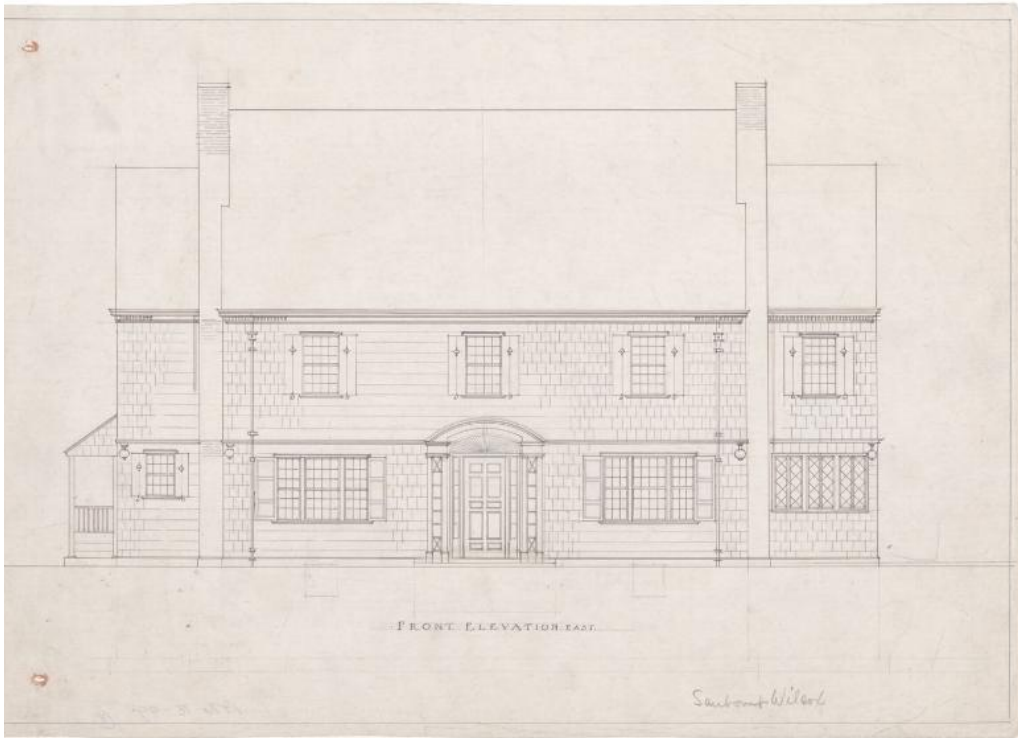


Basic Detail Report



Title House for W.A. Sanborn and W.A. Wilcox, 69 Walbridge Rd, West Hartford, CT.

Date 1925

Primary Maker Smith & Bassette

Medium Architectural drawings; black ink and pencil on linen

Description Architectural plans for a two-and-a-half-story Colonial Revival frame house with second-story overhang, side-gabled roof, and secondary wings with pitched roofs on the gable ends. It is sheathed with wood shingles. The home has a simple wood cornice with modillions and cornice returns. There are engaged end wall chimneys on the main block. The secondary wing on the north (side) elevation has a steeply pitched sloping gable that terminates in a small arcaded porch with square supports on the west (rear) elevation. There are five dormers on the rear elevation; three have hipped roofs, while two are gabled;

Basic Detail Report

three have paired windows, the remaining two, a single window; one is inset

thus interrupting the cornice line. Fenestration consists of a mix of 12/12, 9/9, 8

/8, and 6/6 double-hung sash. These are found in tripartite arrangements on the

first story of the east (front) and side elevations. Multi-pane quarter windows are

present on the gable ends forward of the chimneys. Drop pendants decorate the

front corners of the second-story overhangs. The portico has an arched roof with

curved underside and paired square supports. The paneled wood door is

flanked by multi-pane sidelights and has a detailed wood fan above. Eight

drawings are included in the set; north, south, east, and west elevations, as well

as basement, first, second, and third floor plans. The basement plan includes

laundry, storage, and non-excavated rooms, as well as a foundation and wall

section drawing. First floor plans indicate the brick entry with oak sill, front hall,

den, living and dining rooms, kitchen, butler's pantry, toilet, closets, rear

veranda, and side entry porch. The second floor plan has five chambers, two

bathrooms, closets, and front and rear stairways. The third floor plan includes

two maids' rooms, a bathroom, hallway, closets, and two unfinished attic

spaces.

Dimensions Primary Dimensions (height x width): 20 1/4 x 14 1/2in. (51.4 x 36.8

cm)