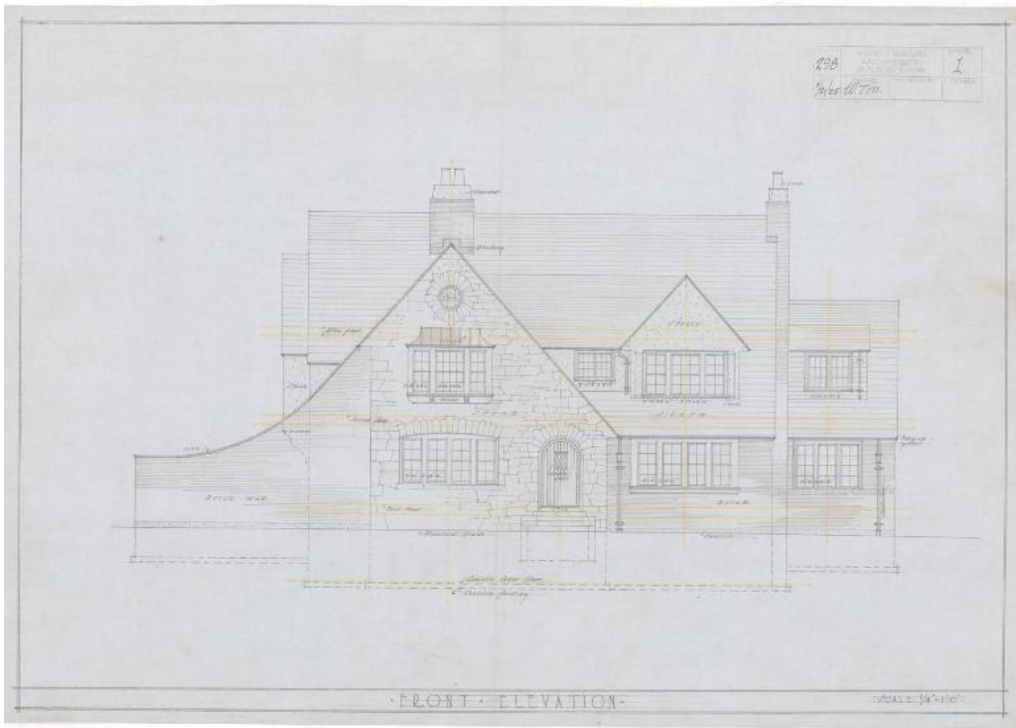


Basic Detail Report



Title Residence for Mr. D. A. Harrington, 165 Terry Road, Hartford

(Alternate Design)

Date 1925

Primary Maker William T. Marchant

Medium Drawings; ink on blue tracing linen with orange dimensional lines

Description Plans for a two-story house with a cellar and attic. The house has two chimneys with chimney pots and a pitched stucco roof. There are stone steps in the front of the house. There is a brick wall surrounding a courtyard with latticework which comes off the kitchen. The drawings include front, north, west, and south elevations, and floor plans for a cellar, first floor, second floor, and attic. The cellar plan shows that it is unexcavated with concrete walls. The first floor plan includes a garage, kitchen, closets, dining room, living room, sun parlor, porch, hall, and butlet's pantry. The second floor has a spare room,

Basic Detail Report

maid's chamber, 2 guest chambers (bedrooms), 3 baths, a hall, a dressing room,
a sitting room, closets, and a sleeping porch. The attic is unfinished.

Dimensions Primary Dimensions (height x width): 18 x 24 1/2in. (45.7 x 62.2cm)