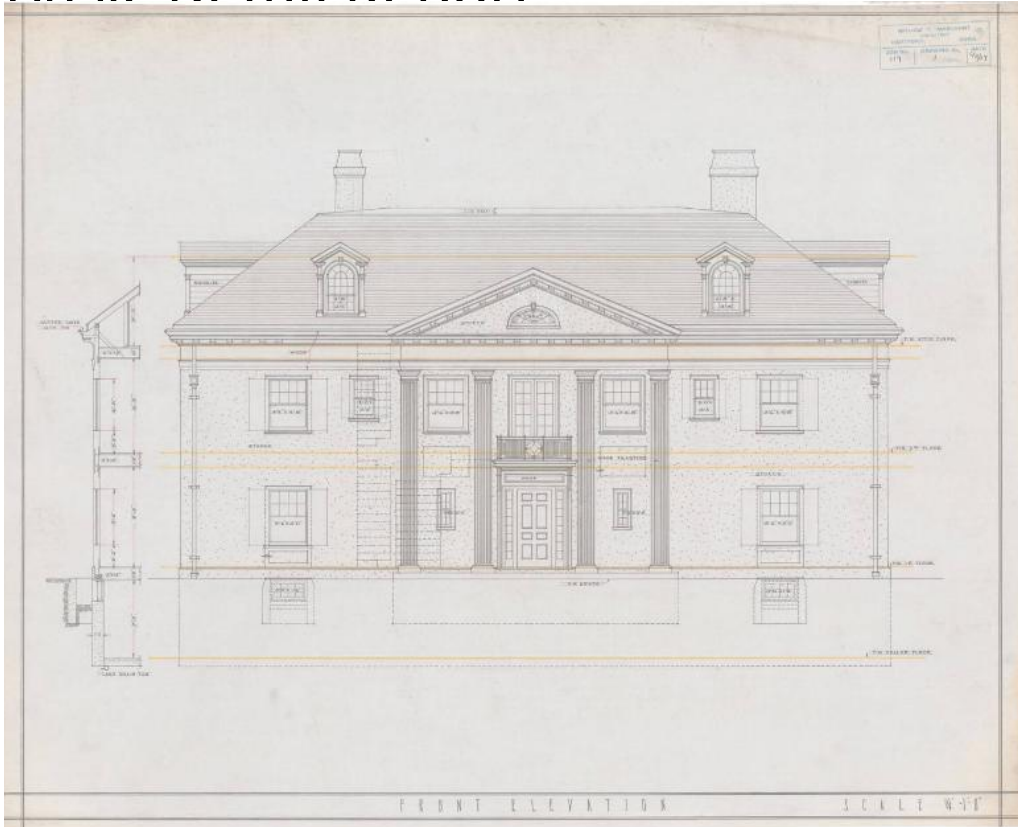


# Basic Detail Report



**Title Residence for W. A. Wilcox. Esq., 1020 Prospect Avenue, Hartford**

Date 1917

Primary Maker William T. Marchant

Medium Architectural drawings; black, red, and yellow ink on linen

Description Architectural plans for a two and a half story Neoclassical frame house with hipped roof, wide frieze band, and modillions. There are two gabled dormers with arched, multi-pane windows on the front (west), north (side), south (side) elevations. The east (rear) elevation has two gabled dormers with arched, multi-pane windows and a hipped dormer with paired, 8/8 double-hung sash. The home is faced with stucco. Fenestration primarily consists of 8/1 double-hung sash, although other arrangements of double-hung, multi-pane sash are present. There is a large, two story sun porch with upper porch

# Basic Detail Report

balustrade on the rear elevation. The porch is enclosed with multi-pane

windows and has doric supports. The facade has a two story, engaged

pedimented portico with Doric pilasters, modillions, and typanum fanlight. The

entry is flanked by sidelights and has a balcony with iron railing above. Eight

drawings are included in the set; front, east, north, and south elevations; as well

as attic and roof, cellar, first floor, and second floor plans. Cellar plans include

laundry, heater coal, range coal, and cold rooms, as well as unexcavated areas,

closet, and a toilet. The first floor plans identify the front porch, stair hall, coat

closet, laboratory, dining and living rooms, den, kitchen, maid's alcove, pantry,

butler's pantry, sun parlor, as well as rear entry and porch. The second floor plan

has five chambers, three bathrooms, a sewing room, stair and service halls, rear

balcony, and various closets. The attic and roof plan includes three maids'

rooms, a bathroom, tar closet, multiple storage areas, and roofline details.

Dimensions Primary Dimensions (height x width): 18 3/4 x 23 3/4in. (47.6 x 60.3

cm)