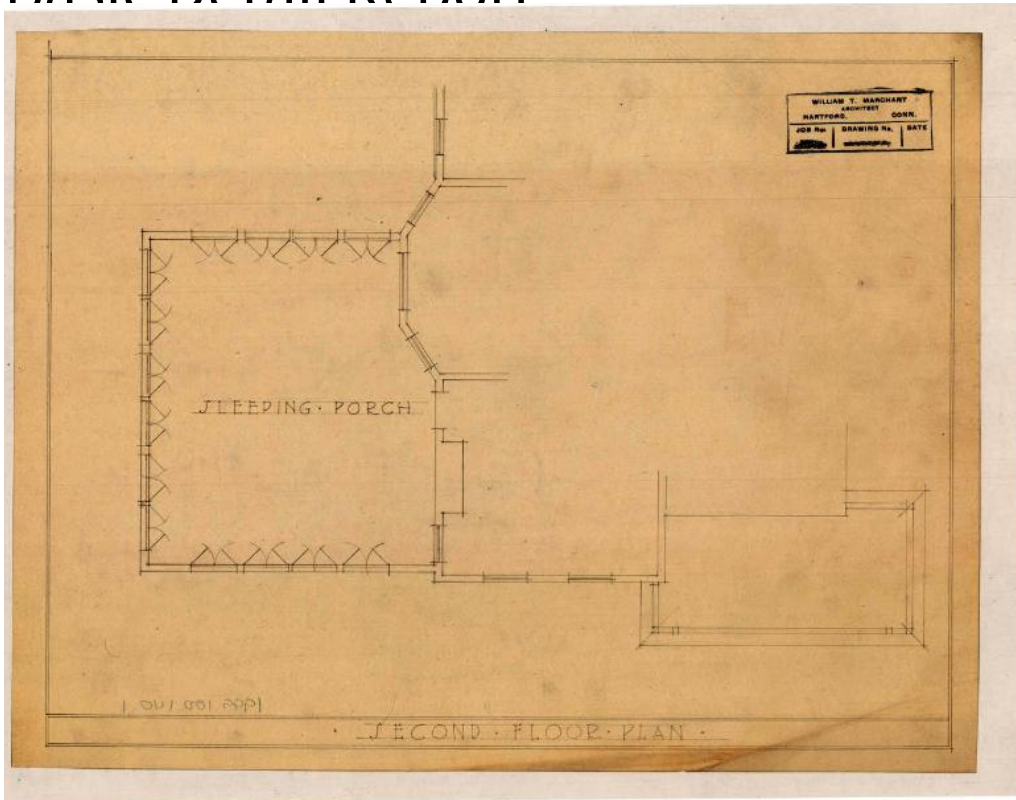


Basic Detail Report



Title Alterations to a House for J. F. Berry, 31 Whitney Street, Hartford

Date 1922 and 1925

Primary Maker William T. Marchant

Medium Drawings; pencil and black ink on tracing paper and paper.

Description Plans are for two additions to a two-story, clapboard house. The drawings consist of east and south elevations with alternate plans, and floor plans for the first and second levels, and cellar. Included on the first floor are a solarium or sun parlor, living room, music room, hall, and porch. The second floor consists of a sleeping porch and roof. The cellar plan shows that the cellar is unexcavated with twelve inch concrete trench walls. The solarium has a tile floor.

Dimensions Primary Dimensions (height x width): 14 7/16 x 23 7/16in. (36.7 x 59.5 cm)