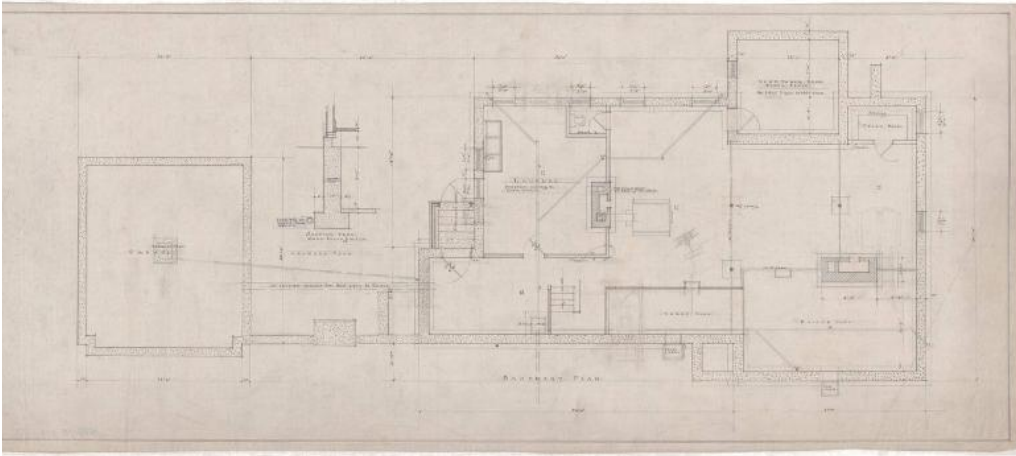


# Basic Detail Report



## Title House for Dr. E. B. Hooker, 31 Woodside Circle, Hartford

Date 1924

Primary Maker Smith & Bassette

Medium Architectural drawings, pencil and black ink on wax-coated linen paper.

Description Plans for a two and one half story Colonial Revival house and a connecting two-story garage. The shingle-sided house features interesting gambrel roofs, with large butting row dormers on the second floor. Additional features include a copper roofed entry portico, and copper gutters. The shingle-sided garage features a gable roof, paneled carriage doors, and a picket fenced enclosure connecting it to the main house. Windows are primarily double hung louvered sash windows, in either the eight-over-eight, or six-over-six configuration. Also featured windows are, round paned windows on the second floor of the garage, as well as a large tri-part window on the South Elevation. Seven drawings are included in the set: Basement, First Floor, Second Floor, and Third Floor plans, as well as East, Front (West,) and combined North / South Elevations. The basement plans include: store room, boiler coal room, vegetable room, range coal room, toilet, laundry, as well as the laundry yard, and garage

# Basic Detail Report

foundations. The first floor plans include: library, living room with large

fireplace, plant room, enclosed verandah, entry porch and vestibule, dining

room with fireplace, toilet, butler's pantry, pantry, kitchen with alcove, side

porch, kitchen yard, garage. The second floor plans include: two chambers with

fireplaces, dressing room, two bath rooms, hall, chamber with ensuite bath, two

maids rooms, and trap door featured in garage. The third floor plans include:

stairs to third floor (open) space.

Dimensions Primary Dimensions (height x width): 13 1/2 x 31 1/4in. (34.3 x 79.4

cm)