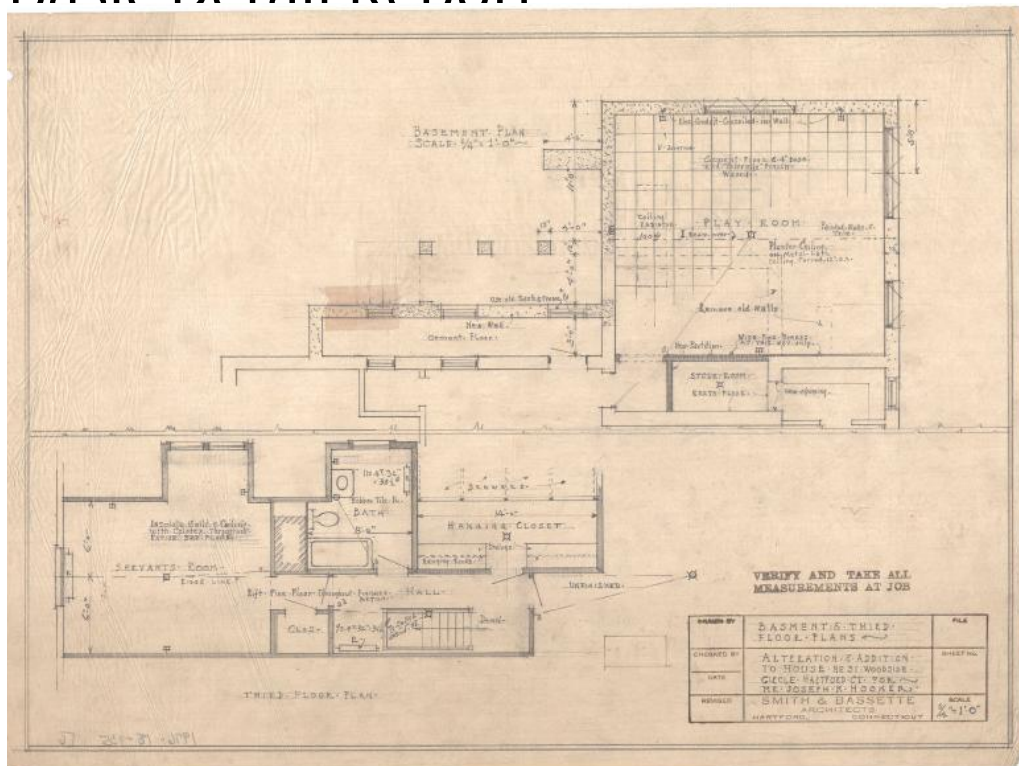


# Basic Detail Report



## Title House for Joseph K. Hooker, 31 Woodside Circle, Hartford

Date after 1930

Primary Maker Smith & Bassette

Medium Architectural drawings; black ink and pencil on paper

Description Plans for alterations and addition to a two-and-a-half story Colonial Revival house with gambrel roof and cross gambrel wing. It has a full width shed dormer with double-hung, multi-pane sash windows. The first story is faced with stucco while the cross gambrel dormer has horizontal board siding. Most of the windows are double-hung with multi-pane sashes, though a few multi-pane tripartite and picture windows are present. Alterations include expanding the first floor dining and living rooms and the addition of a basement playroom; first floor sunroom and open porch; second floor chamber, bath, and dressing room; and attic story servants' room, bath, and hanging closet. Six drawings are

# Basic Detail Report

included in the set: north, south, and east elevations; as well as combined

basement and third floor, first floor, and second floor plans. The basement

contains a play room and storage area. The first floor plan identifies the kitchen,

pantry, a butler's pantry with glass cupboards and rubber tile floor, a dining

room with oak floor, the living room, an open porch with fir floor, and a sunroom

with French doors and slate tile. The second level plan has three chambers,

closets, a dressing room with oak floors, and a tiled bath with tub. Third floor

plans indicate a servants' room, bath, and hanging closet.

Dimensions Primary Dimensions (height x width): 15 1/2 x 20 3/4in. (39.4 x 52.7

cm)