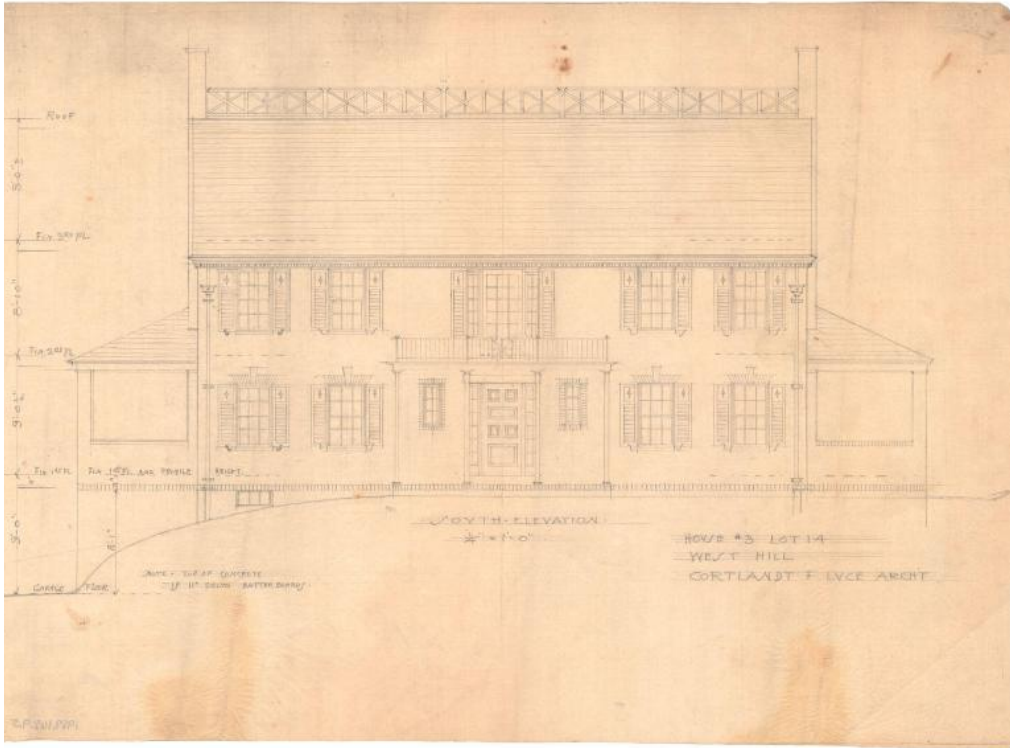


Basic Detail Report



Title House for Horace R. Grant, 36 West Hill Drive, West Hartford

Date 1924

Primary Maker Cortlandt F. Luce

Medium Architectural drawings; pencil on paper

Description Plans for a Colonial Revival residence. Notable features include a roof balustrade, paired double-end chimneys, six over six double-hung sash windows, splayed lintels over first floor windows, and a balcony on the facade. Drawings in the set include front and side elevations, a transverse section of the the side elevation, and basement through attic floor plans. The basement plan has a garge, coal room, laundry, heating room, closets, a lavatory, and storage areas. Rooms included in the first floor plans are a porch, living room, kitchen, pantrys, large front hallway, service hall, dining room, breakfast porch, closets, and lavatory. The second floor has four chambers (bedrooms), two bathrooms,

Basic Detail Report

closets, and a balcony. Rooms in the attic include a playroom, maid's room,

bathroom, closets, and storage area.

Dimensions Primary Dimensions (height x width): 14 x 19 1/2in. (35.6 x 49.5cm)