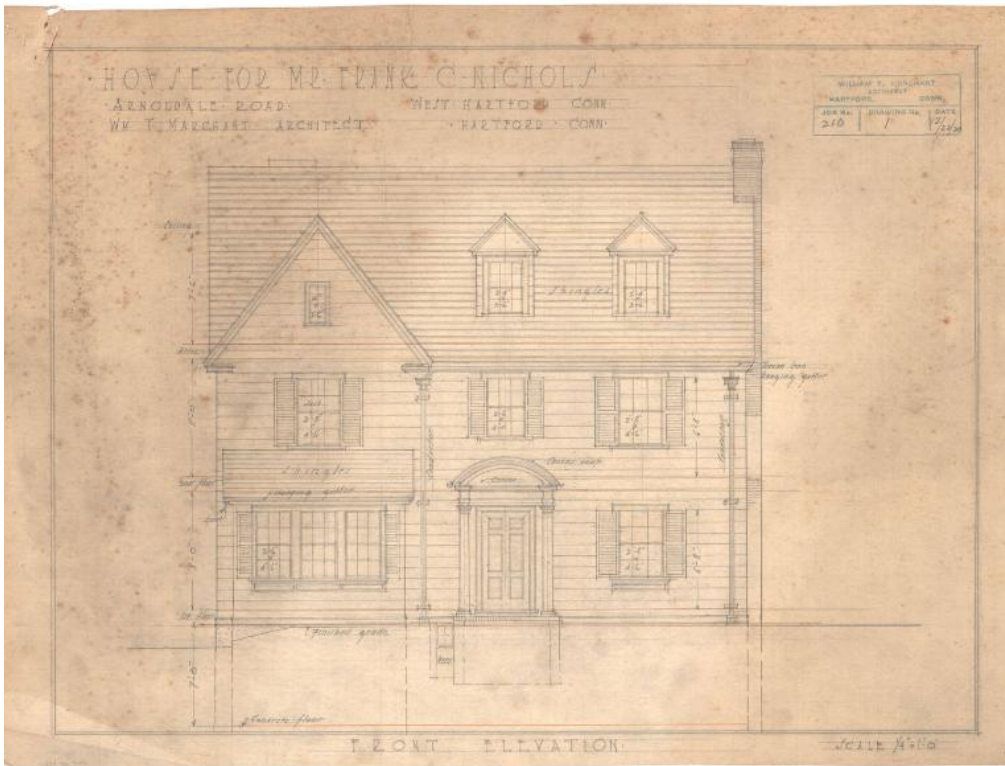


Basic Detail Report



Title House for Frank Nichols, 34 Arnoldale Road, West Hartford

Date 1920

Primary Maker William T. Marchant

Medium Architectural drawings; pencil and ink on paper

Description Plans for a clapboard Colonial Revival residence with shingle roof.

Design elements include shuttered double-hung sash windows, pedimented dormers on the attic level, a front entry porch with arched pediment and columns, and two chimneys. In addition to front, rear, and side elevations, the set includes floor plans for the cellar, first floor, second floor, and attic. Rooms in the cellar include a lavatory, cold room, laundry, and coal rooms. The first floor has a piazza with red quarry tile floor, kitchen, dining room, vestibule, hall,

Basic Detail Report

porches, closets, and pantries. Second floor rooms include closets, three

chambers, a bathroom, and an alcove. The attic has closets, two chambers,

storage space, and a bathroom.

Dimensions Primary Dimensions (height x width): 13 x 17 5/16in. (33 x 44cm)