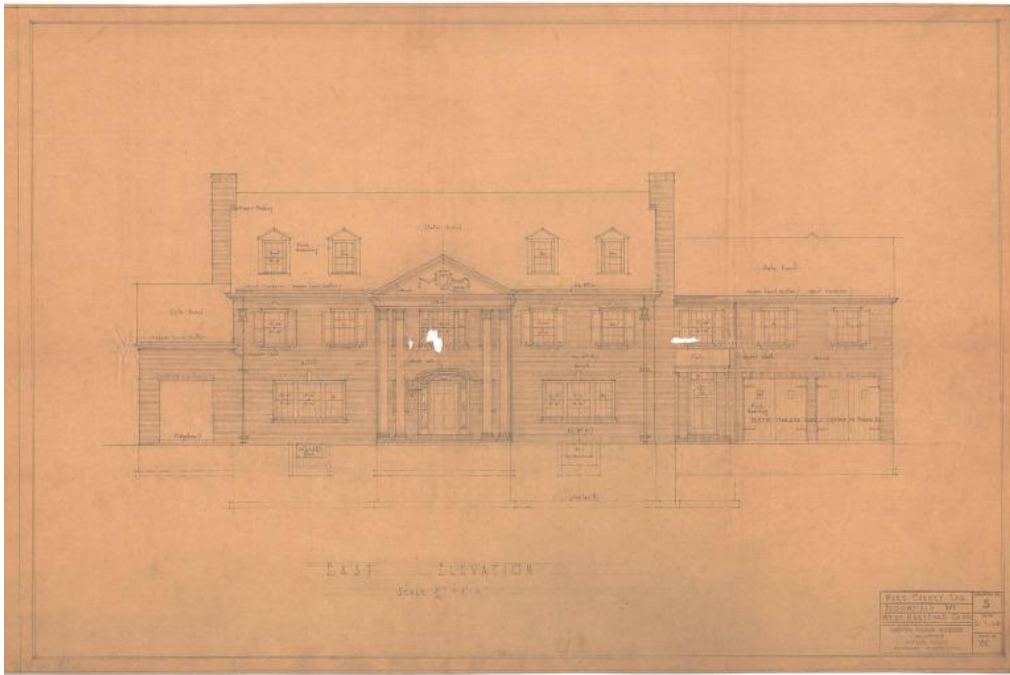


# Basic Detail Report



## Title House for Ward Cheney, 69 Sunny Reach Drive, West Hartford

Date 1928

Primary Maker Lester Beach Scheide

Medium Architectural drawings; pencil and ink on paper

Description Plans for a brick Neoclassical house with shingle accents and slate roof. The house has a patio on one side and a garage wing on the other. Other features include: full height entry portico with doric-style columns, double-hung sash windows on the first and second levels, gabled dormer windows on the attic level, and two symmetrical end chimneys on the main wing. Drawings in this set include front, rear, and side elevations, as well as floor plans for the basement, first floor, second floor, and attic. The basement has a laundry, boiler room, and storage rooms. On the first floor there is a porch, living room, dining room, breakfast room, serving pantry, kitchen, library, maid's dining room, closets, lavatory, and garage with attached chauffeur's room and bathroom.

# Basic Detail Report

Second floor rooms include four bedrooms, four maid's rooms (over garage), closets, three toilets, one toilet with dressing room, and an alcove. The attic has three additional chambers and a bathroom. There are also drawings of details and a plot plan with landscaping.

Dimensions Primary Dimensions (height x width): 29 1/2 x 36 1/2in. (74.9 x 92.7 cm)