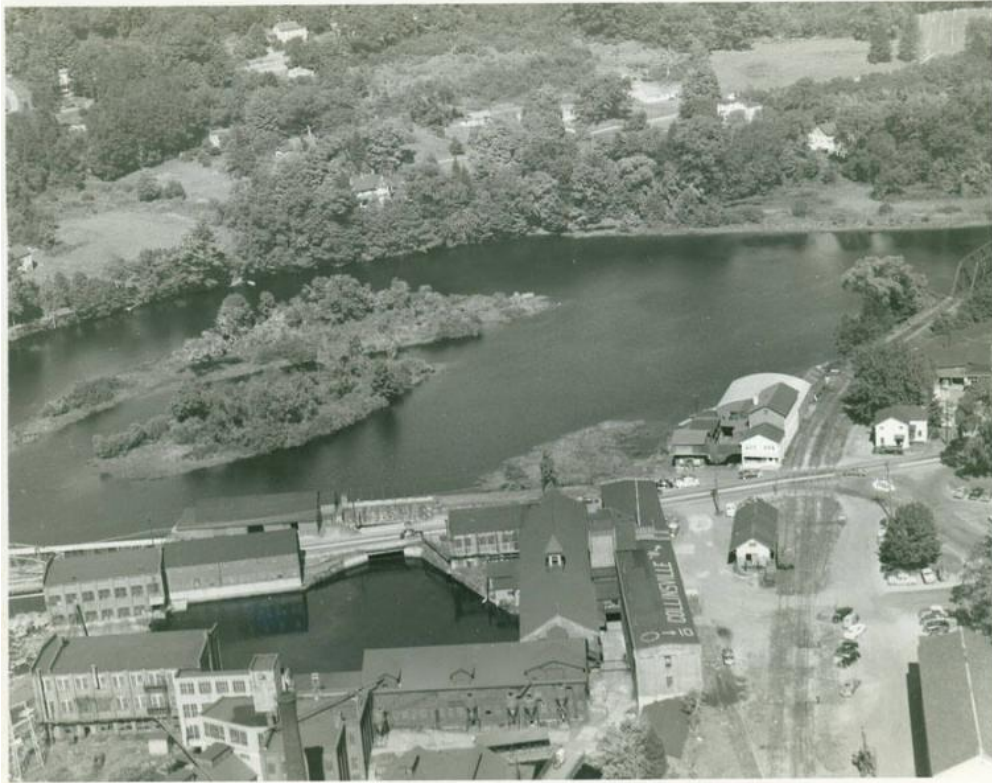


Basic Detail Report



Title Aerial View of Collinsville

Date before 1955

Primary Maker Unknown

Medium Photography; gelatin silver print on paper

Description Aerial view of a complex of industrial buildings on a river. Brick factory buildings surround a millpond in the foreground. Lettering on the roof of one building reads "COLLINSVILLE;" an arrow points north. A road runs along the the river, with an iron highway bridge at the far left. Railroad tracks cross the road and run along the river to an iron railroad bridge at the far right. Two buildings at the right appear to be railroad stations. Cars are parked along the tracks. Two small islands are in the river. Houses, trees, and fields are on the far shore.

Basic Detail Report

Dimensions Primary Dimensions (image height x width): 7 1/2 x 9 7/16in. (19.1 x 24cm) Sheet (height x width): 8 x 10in. (20.3 x 25.4cm)