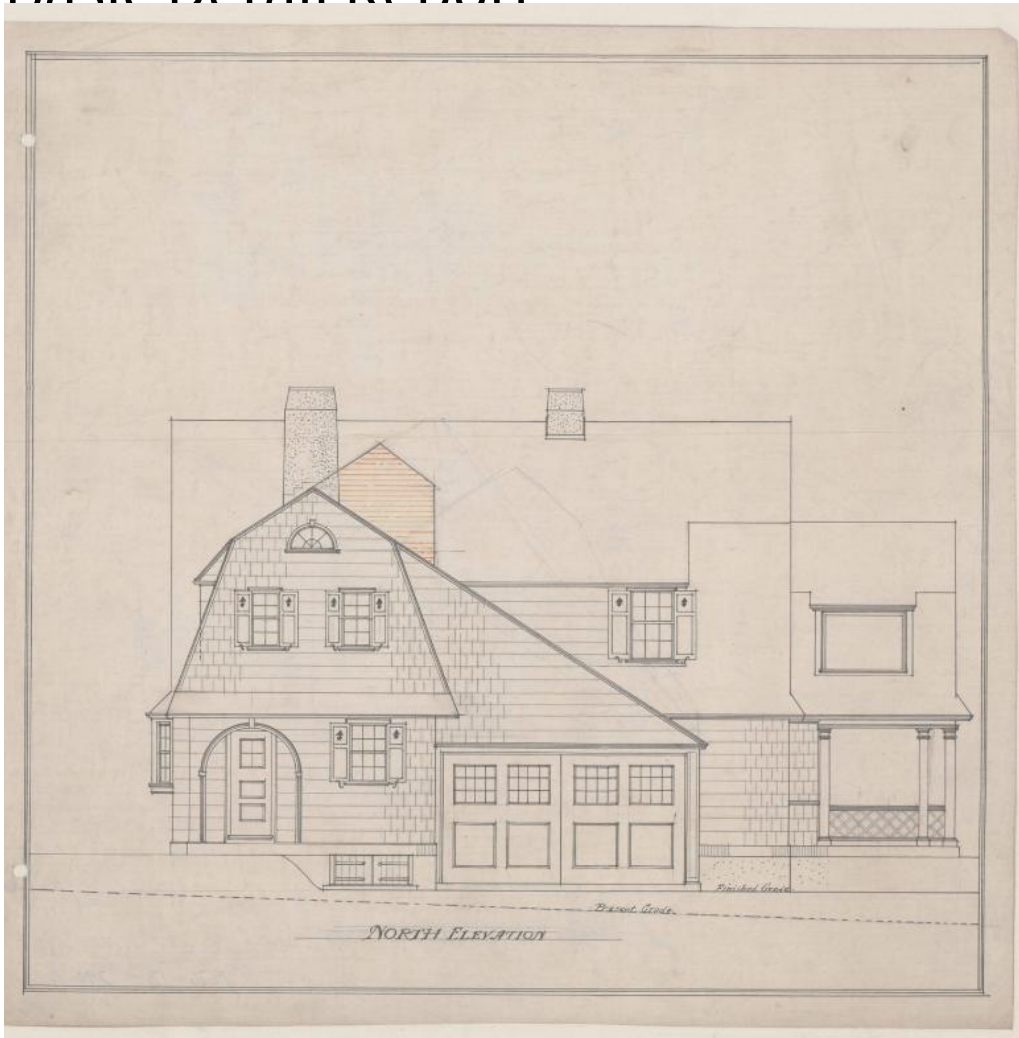


Basic Detail Report



Title House for Henry F. Stoll, 137 Steele Road, West Hartford

Date 1916

Primary Maker Smith & Bassette

Medium Drawings; pencil, black, brown, and orange ink, on linen paper.

Description Plans are for a two-story house with basement and attic. It has a shingled colonial revival facade, but other elevations are irregular with gambrel roofs and a garage on the first floor. The house also has a projecting bay window, a lunette, trellis work, and shutters at most windows. The drawings include north, east, south, and west elevations, as well as, floor plans for the foundation, first, and second levels. The basement has a store room, laundry

Basic Detail Report

room, kitchen coal room, and furnace coal room. Included on the first floor are a garage, veranda, living room, hall, dining room, butlers pantry, kitchen, pantry, porch, coat closet, and "pot. closet." All rooms have oak or Georgia pine flooring. The second floor is comprised of four chambers (bedrooms), five closets, two bathrooms, one toilet room, a balcony, and a unfinished trunk room. Oak flooring is in all bathrooms and Georgia pine is in the rest of the rooms on the second level.

Dimensions Primary Dimensions (height x width): 16 5/8 x 16 3/8in. (42.2 x 41.6 cm)