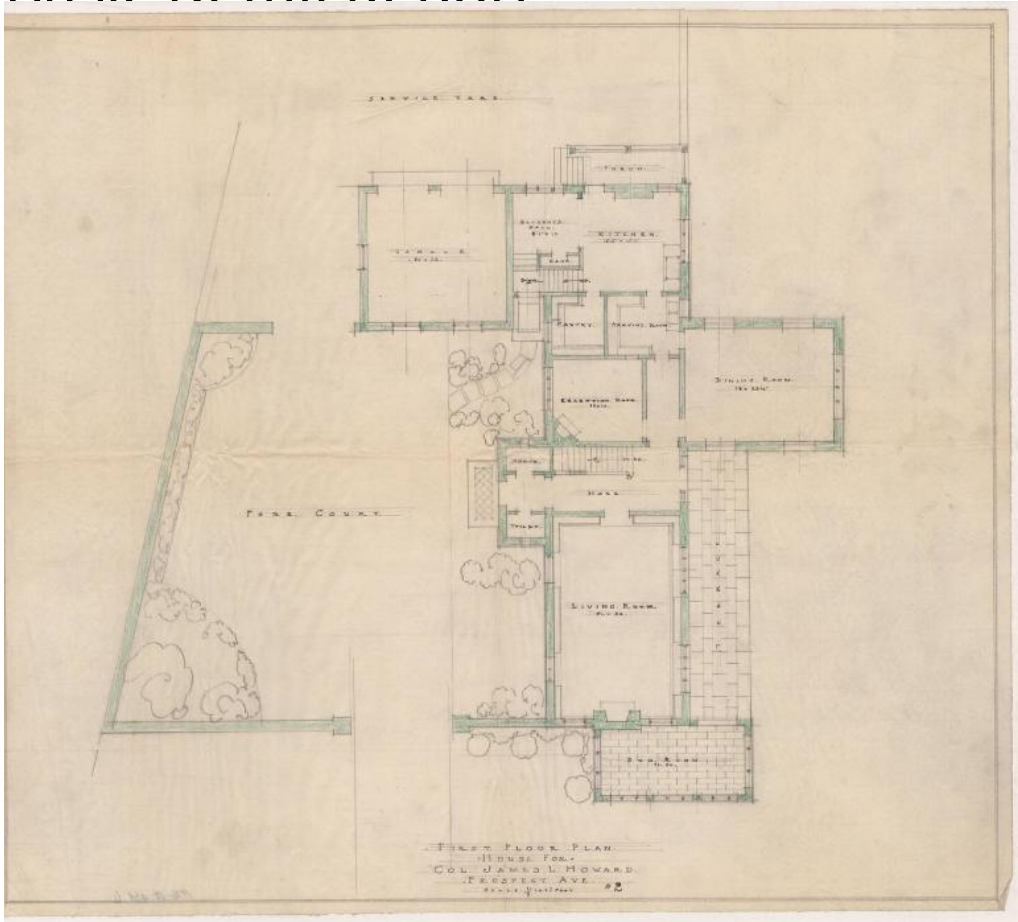


Basic Detail Report



**Title House for Colonel James L. Howard, 1210 Prospect Avenue,
Hartford**

Date 1925

Primary Maker Smith & Bassette

Medium Drawings: pencil and black ink on tracing paper, some with orange, red, and green shading. The elevations of the house are also drawn using colored pencils.

Description Plans are for a two-story Tudor revival house with attic and basement. The house has quarter-round lunettes, half-timbering, stucco, three chimneys with chimney pots, French doors, and an arched door. The drawings include north, east, south, and west elevations, as well as floor plans for the first

Basic Detail Report

and second floors. Interior drawings of the home were drawn too. Included on

the first floor are a garage, servants hall, kitchen, pantry, serving room,

reception room, dining room, hall, coats closet, toilet, sunroom, terrace, porch,

a fore court, and closet. The second floor has two maids rooms, two guest

rooms, two owners rooms, a boys room, four bathrooms, and nine closets.

Dimensions Primary Dimensions (height x width) 25 1/2 x 44 5/8in (64.8 x 113.3

cm) and smaller.