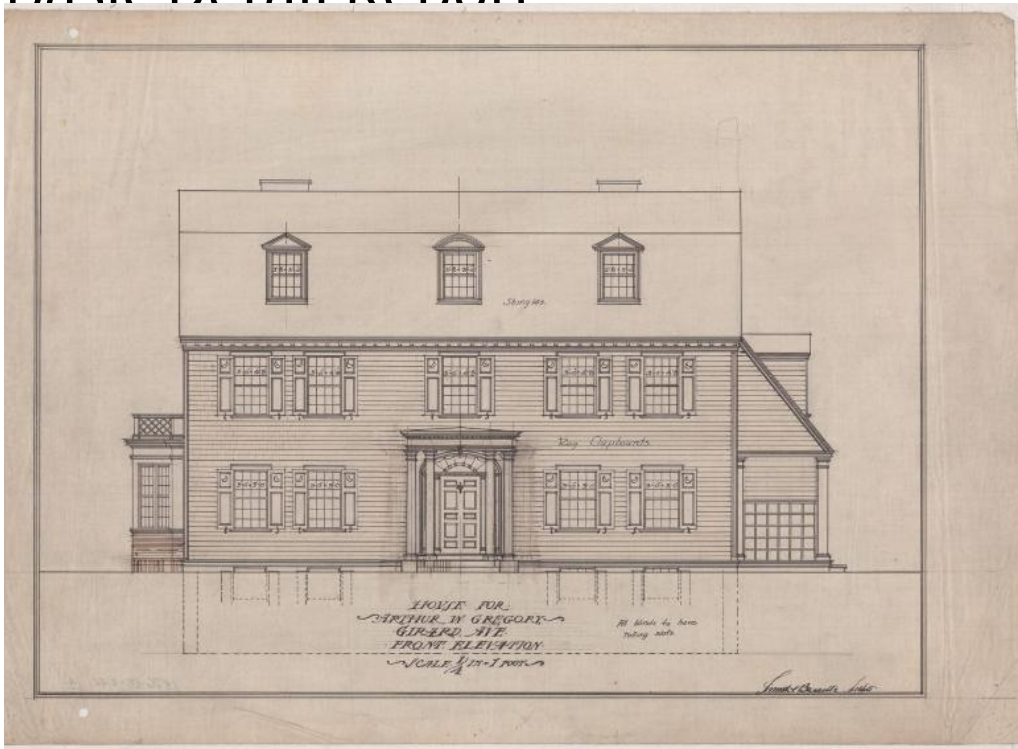


Basic Detail Report



Title House for Arthur W. Gregory, 235 Girard Avenue, Hartford

Date early 20th century

Primary Maker Smith & Bassette

Medium Architectural drawings: black ink and pencil on linen

Description Architectural plans for a two and a half story Colonial Revival frame house with modillioned cornice, cornice returns, side-gambrel roof, and cross-gambrel rear wing. The gambrel roof on the rear wing has a long slope and variable eave-line heights. The home is sheathed in horizontal board siding. There are three pedimented dormers on the east (front) elevation and one on the west (rear) elevation. Two of the front dormers are gabled while the third, centered, dormer has an arched roof. The rear dormer has a gable roof. Primary fenestration consists of 12/12 double-hung sash with wood sills and lintels, however 9/9 and 8/8 double-hung windows are present on the side elevations

Basic Detail Report

and in the dormers. There is a Palladian window with brick arch in each gable end of the main block and a one-story, three-sided bay window on the first story of the south (side) elevation. There is a partial-width, two-story porch with square supports, wide entablature, and shed roof on the west elevation. French doors lead out onto both levels of the rear porch. The semicircular portico has a wide entablature, dentilled cornice, and Doric supports. The entry is flanked by sidelights and has a fanlight above. Eight drawings are included in the set; east, west, north, and south elevations; as well as basement, first, second, and third-floor plans. Basement plans include wine, laundry, vegetable, toy, coal, and cold storage rooms. The first-floor plan indicates the entry hall, dining and living rooms, kitchen, two pantries, side porch, and rear veranda. The second-floor plan has five chambers, two bathrooms, one dressing room, various closets, and a rear balcony. The third-floor plan includes four chambers, one bathroom, and various closets.

Dimensions Primary Dimensions (height x width): 15 1/2 x 22in. (39.4 x 55.9cm)