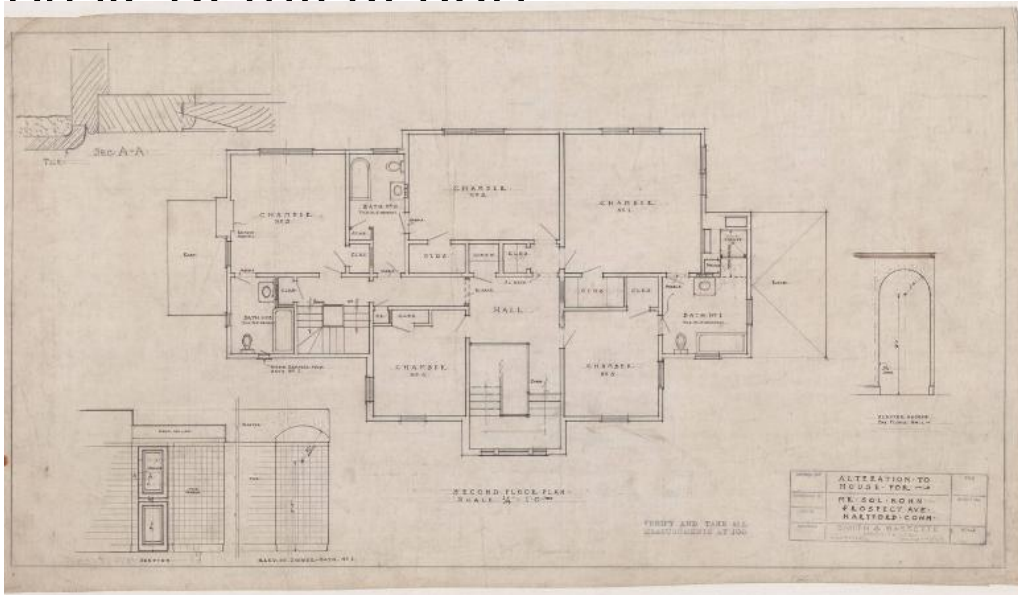


Basic Detail Report



Title Alterations to a House for Sol Kohn, 820 Prospect Avenue, Hartford

Date early 20th century

Primary Maker Smith & Bassette

Medium Architectural drawings; black ink and pencil on linen

Description Architectural plans for alterations to a house and garage. Two drawings are included in the set, one for alterations to the second floor of the home and the other for a one bay addition to a one-story, two-bay garage with hipped roof. Drawings for the home alterations include the second-floor plan, threshold section drawings, and detail sketches of bathroom elevations and a plaster hallway arch. Garage alterations indicate the addition of a one-story bay to the extant garage and extension of the hipped roof over the new construction. In keeping with the original design the garage addition is faced with stucco. It has double-hung, multi-pane fenestration and paired wood-panel doors with multi-pane windows in their upper halves.

Basic Detail Report

Dimensions Primary Dimensions (height x width): 18 x 31 3/4in. (45.7 x 80.6cm)