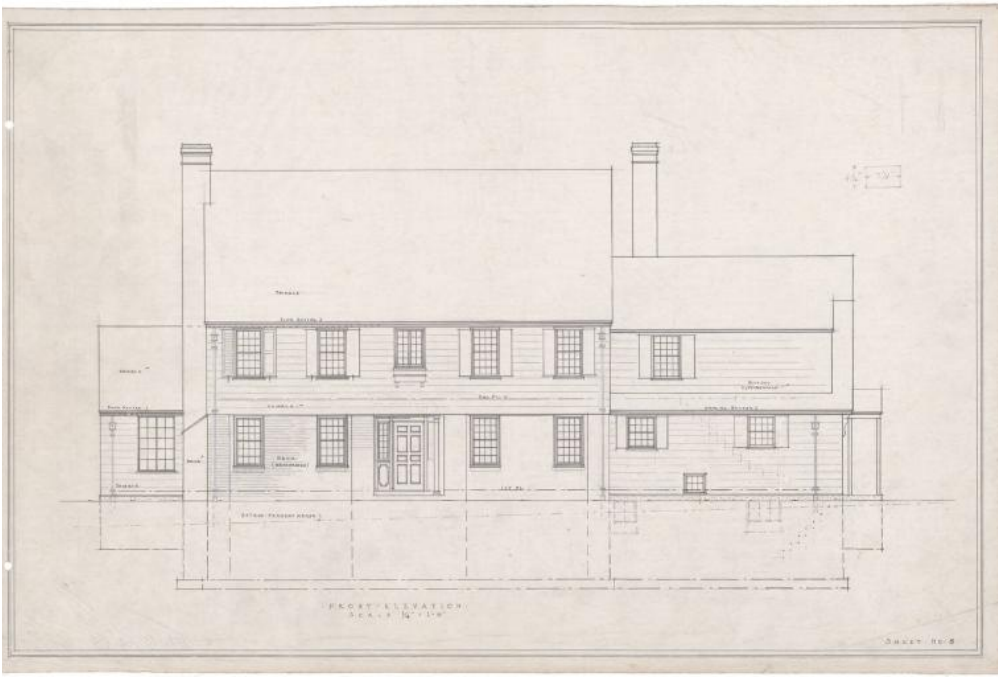


Basic Detail Report



Title House for H.H. Armstrong, 25 Woodside Circle, Hartford

Date after 1925

Primary Maker Smith & Bassette

Medium Drawings; black ink on tracing paper

Description Plans for a two story house with a cellar and attic. The house has 2 brick chimneys and a cypress shingled roof. A sun room extends from the east side of the house with a flagstone walkway. On the west side of the house is a door with a pitched roof with matching boards. The house has a garage with a garden tool shed attached and also a grape arbor off the kitchen. The plans include front, east west, north, and south elevations as well as plans for the foundation, first, second, and third floors. The foundation plan has cement floors with a coal bin and laundry room. The first floor includes a sun room (cement floor), a living room, dining room, hall, and study all with oak flooring. The kitchen has a pine floor and the plans also include a butler's pantry, toilet,

Basic Detail Report

and three small porches. The second floor plans show two chambers

(bedrooms) with oak flooring and two servant's rooms with pine floors, as well

as three baths and several halls and closets. The third floor has a stairwell with

pine stairs and a hanging closet.

Dimensions Primary Dimensions (height x width): 15 3/4 x 6 1/4in. (40 x 15.9cm)