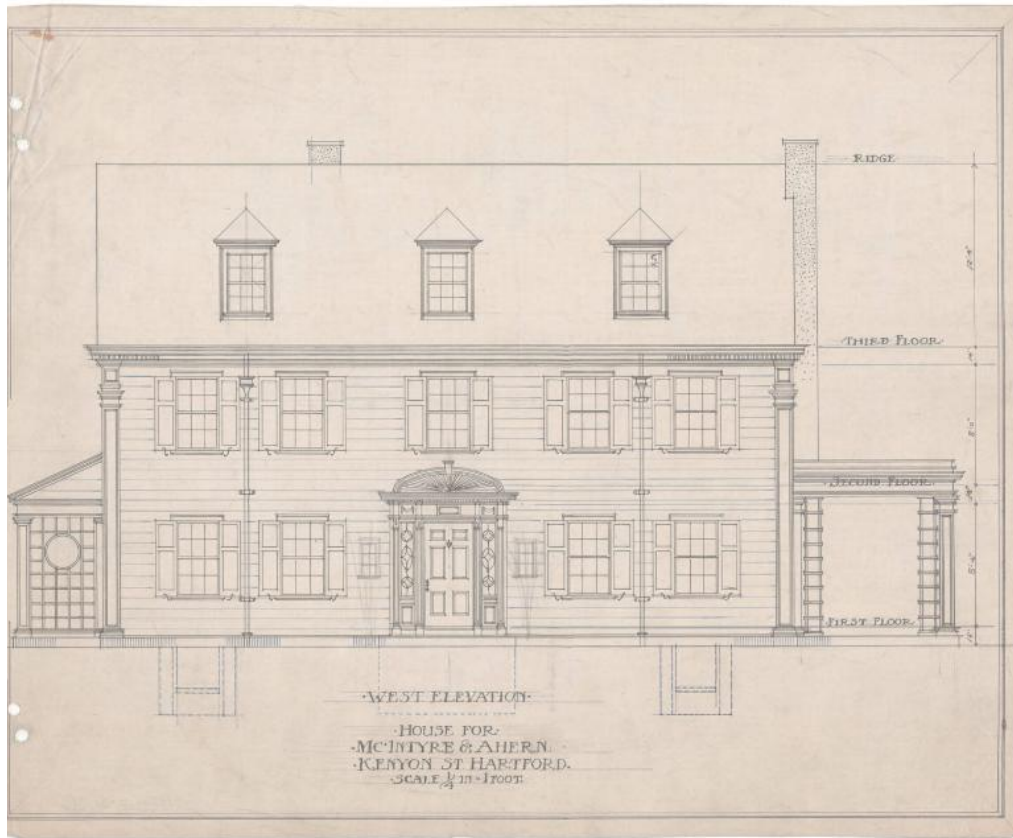


# Basic Detail Report



## Title House for McIntyre & Ahern, Kenyon Street, Hartford

Date 1911-1925

Primary Maker Smith & Bassette

Medium Architectural drawings; ink and pencil on paper

Description Plans for a two-story clapboard Colonial Revival residence with the following design elements: pedimented dormers, symmetrically aligned double-hung sash windows, and two chimneys. Drawings included in the set are front, rear, and side elevations, and floor plans for each level. Rooms in the basement include coal rooms, a lavatory, storage, and laundry room. On the first floor, the architect included a porch, pantry, butler's pantry, kitchen, dining room,

# Basic Detail Report

reception room, vestibule, hall, living room, and veranda. Second floor rooms on the plan are four chambers, two bathrooms, and closets. The attic has two chambers, a bathroom, closets, and a hanging closet.

Dimensions Primary Dimensions (height x width): 13 3/4 x 17 1/4in. (34.9 x 43.8 cm)