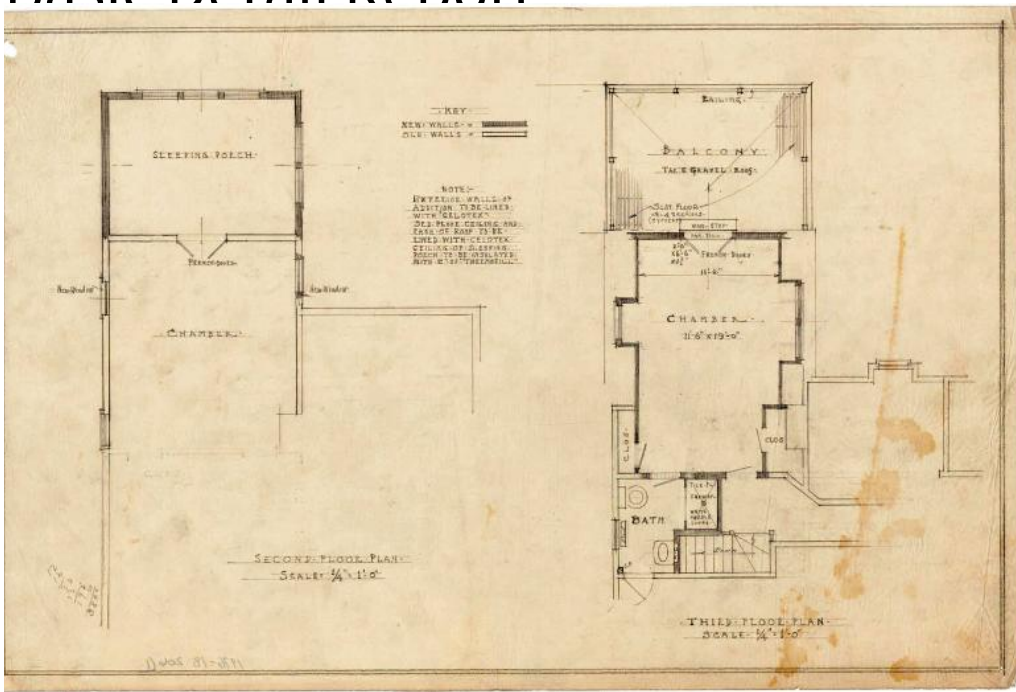


Basic Detail Report



**Title Addition to the House of Mrs. Charles Taylor, 232 Kenyon Street,
Hartford, Conn.**

Date 1929-1931

Primary Maker Smith & Bassette

Medium Architectural drawings; pencil on tracing paper

Description Plans for a three story frame addition with clapboard siding include rear and side elevations, as well as floorplans for the foundation and first through third levels. A kitchen, dining room, pantry, butler's pantry, servant's hall, and porch are noted on the first floor, all with fir flooring. The second floor contains a chamber (bedroom) with French doors opening onto a sleeping porch insulated with Thermofill. Additions to the third floor include a bathroom, closets, and a chamber with French doors leading to a balcony. The balcony is

Basic Detail Report

surrounded by a hip-length lattice-like railing and has cypress slat flooring, with a tar and gravel roof. Designer also noted that Celotex should line the exterior walls and ceiling of the addition.

Dimensions Primary Dimensions (height x width): 13 3/4 x 20 3/4in. (34.9 x 52.7 cm)