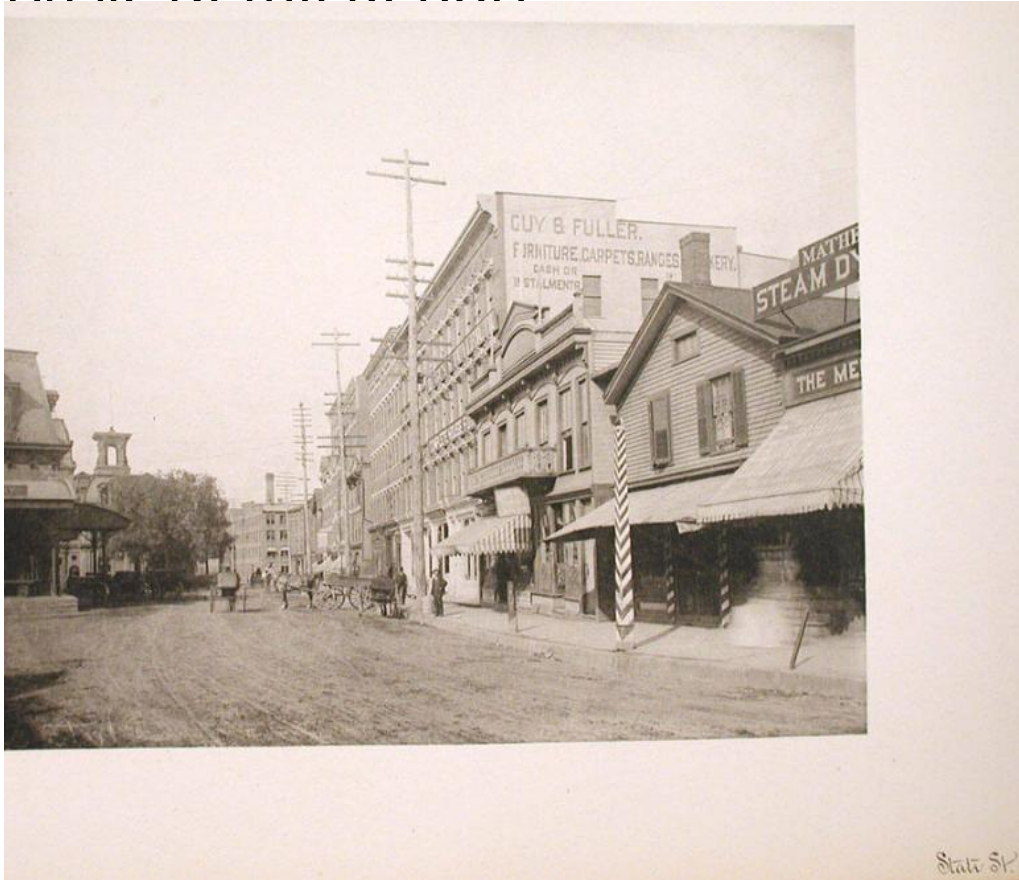


Basic Detail Report



Title Photogravures of Meriden

Date 1880-1900

Primary Maker Unknown

Medium Photomechanical prints; photogravures on paper in photograph album.

Description Photograph album includes photogravures of private residences, churches, and public buildings in Meriden, Connecticut at the turn of the 19th century. Photograph album also includes a photograph of State Representative O. H. Platt and his home. Surnames of Meriden residents included in the album are Birdseye, Bradley, Bradstreet, Forbes, Clark, Converse, Curtis, Breese, Davis, Dodd, Dryhurst, Eggleston, Evarts, Falus, Fay, Fairchild, Garlick, Geisher, Hubbard, Hull, Hurmen, Greenaugh, Griswold, Hall, Hyatt, Jones, Kelsey, Kenard, Linus, Little, Lohmann, Linsley, Lyon, Miller, Mosher, Murphy, Nagel,

Basic Detail Report

Newport, Page, Parker, Petter, Billard, Platt, Rand, Richmond, Rogers, Savage,

Schuelzer, Stockder, Sultiff, Tait, Uphouse, Wilcox, Wilson, Winslow, White, Yale,

and Billard. Public buildings include the Parochial School, German-American

School, Baptist Church, Center Congregational Church, First Congregational

Church, Methodist Church, St. Andrews, St. Johns, St. Laurent' s, St. Rose, St.

Paul Universalist, Lutheran Church, Meriden Town Hall, The Meriden House,

Pacific Lodge, Prattsville School, State Reform School, State Reform Chapel,

State Reform Cottages, and the Byxbee and Parker Hose Houses. Photogravures

of city streets, downtown, and private residences in the album include Broad

Street, Main Street, Colony Street, West Main Street, State Street, Palace Block,

Curtis Street, Cottage Street, East Main Street, Hobart Street, Liberty Street,

Catlin Street, State Street, Smith Colony, Cook Avenue, King Street, Queen

Street, North First Street, Randolph Avenue, Linsley Avenue, Windsor Avenue,

Lincoln Street, Chestnut Street, Griswold Street, and Sherman Avenue.

Dimensions Primary Dimensions: 8 1/2in. (21.6cm) Sheet: 10 x 13 3/4in. (25.4 x

34.9cm) Other: 10 1/4 x 14 1/4in. (26 x 36.2cm)