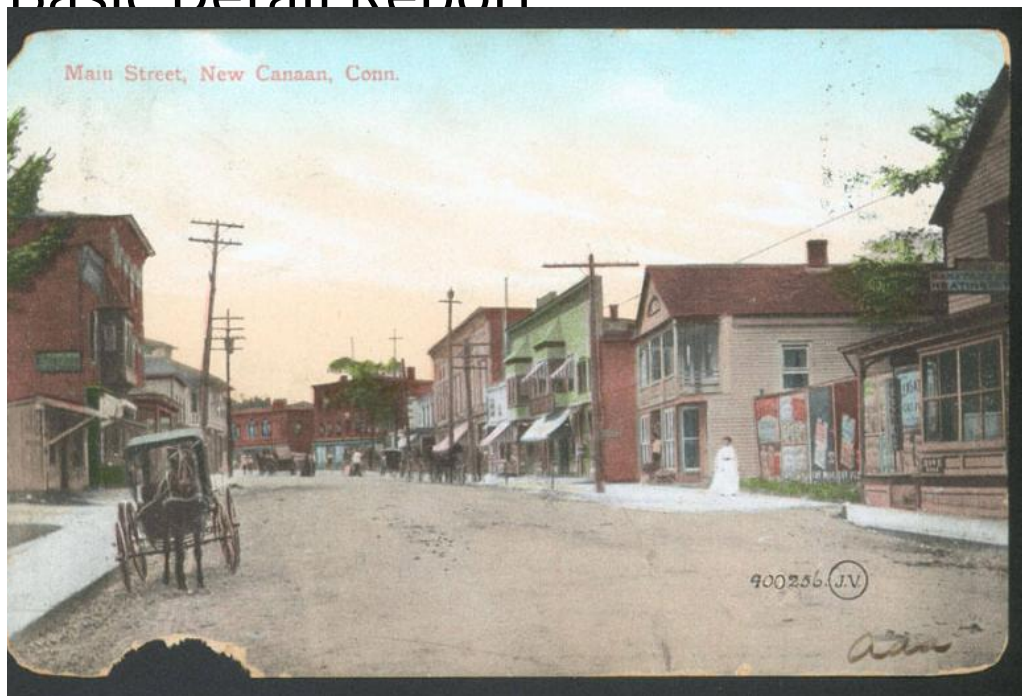


# Basic Detail Report



## Title Postcards of People and Scenery

Date 1900-1930

Primary Maker Souvenir Post Card Co.

Medium Photomechanical prints; colored and black and white printers' inks on postcards; photography; gelatin silver print on postcard

Description Subjects include street scenes and scenery in Waterbury, New Canaan, Middletown, Meriden, Ivoryton, Old Greenwich, Danbury, and Greenfield, Connecticut. One postcard depicts nurses tending to patients in an unidentified hospital.

Dimensions Primary Dimensions (image height x width): 3 1/2 x 5 1/2in. (8.9 x 14cm) and smaller Sheet (height x width): 3 1/2 x 5 1/2in. (8.9 x 14cm)