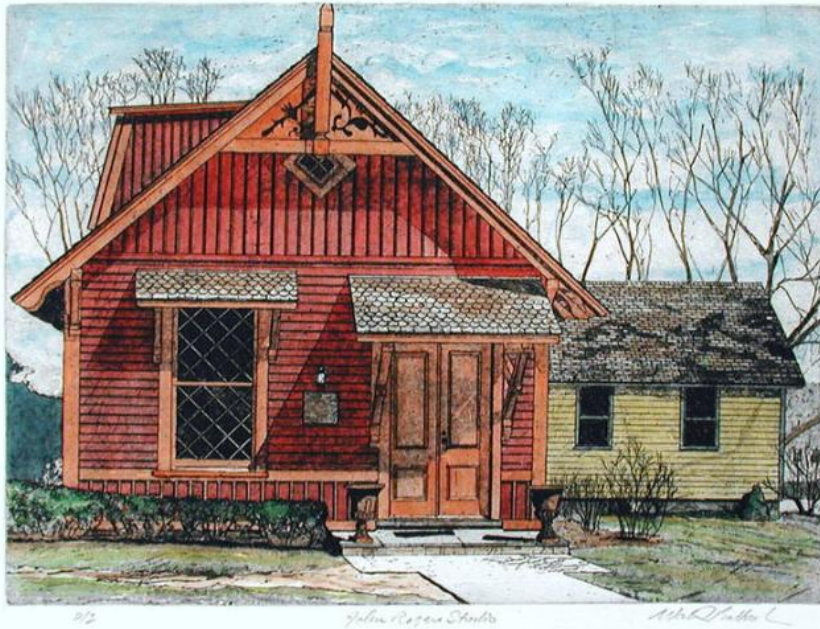


# Basic Detail Report



## Title John Rogers Studio

Date late 20th-early 21st century

Primary Maker Walter Buttrick

Medium Etching; printer's ink and watercolor on wove paper

Description View of a small frame building. Ornamental urns frame the door. A window at the left has diamond panes and roof with fish-scale shingles. A similar roof is over the double doors at the right. There is ornamental fretwork in the gable. Leafless trees are in the background and a low hedge of small bushes is in the left foreground.

Dimensions Primary Dimensions (image height x width): 8 7/8 x 12in. (22.5 x 30.5 cm) Sheet (height x width): 12 x 15in. (30.5 x 38.1cm) Platemark (height x width): 8 7/8 x 12in. (22.5 x 30.5cm)