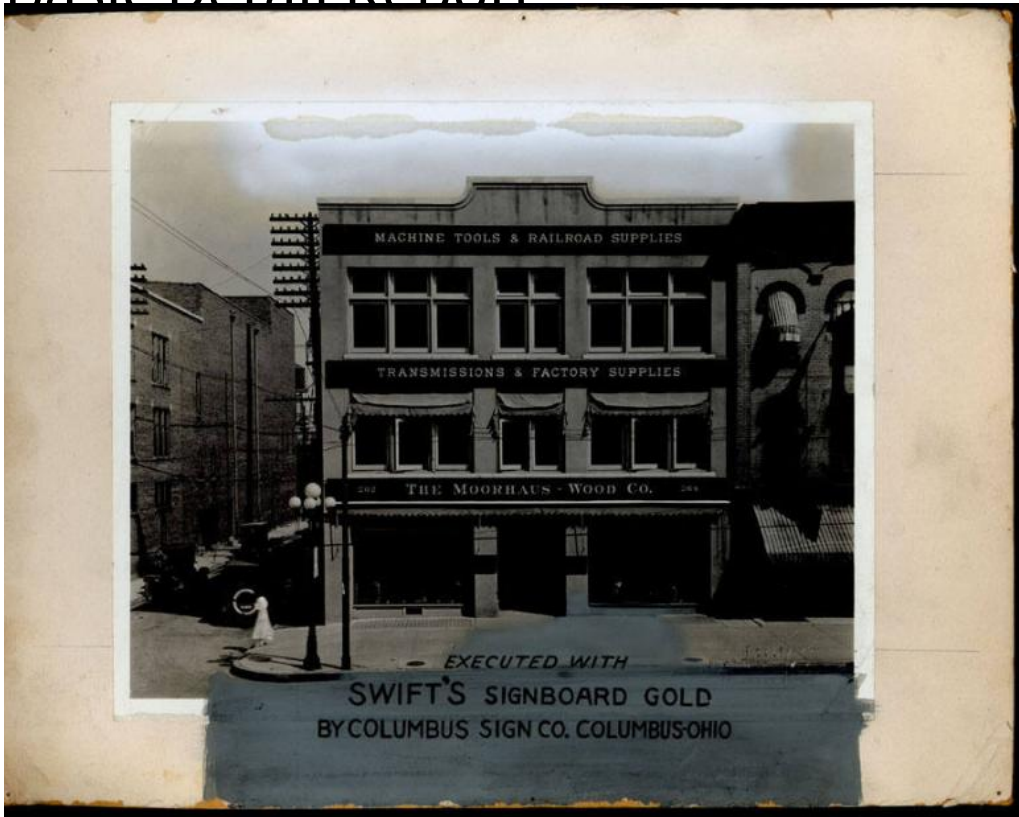


Basic Detail Report



Title Storefront of The Moorhaus-Wood Co.

Date about 1915

Primary Maker Unknown

Medium Photography; gelatin silver print with gouache and black ink on paper
mounted on cardboard

Description A masonry retail store has signs with gilt lettering that read

"MACHINE TOOLS & RAILROAD SUPPLIES / TRANSMISSIONS & FACTORY

SUPPLIES / 262 THE MOORHAUS-WOOD CO. 264". The building has plate glass

store windows and awnings. Brick buildings are the left and right. Utility poles,

trolley poles, and electric street lamps are visible. Automobiles are parked in a

street at the left. A woman is waiting to cross the street.

Basic Detail Report

Dimensions Primary Dimensions (image height x width): 9 x 9 3/8in. (22.9 x 23.8

cm) Sheet (height x width): 8 x 10in. (20.3 x 25.4cm) Mount (height x width): 10 3

/8 x 13 3/8in. (26.4 x 34cm)