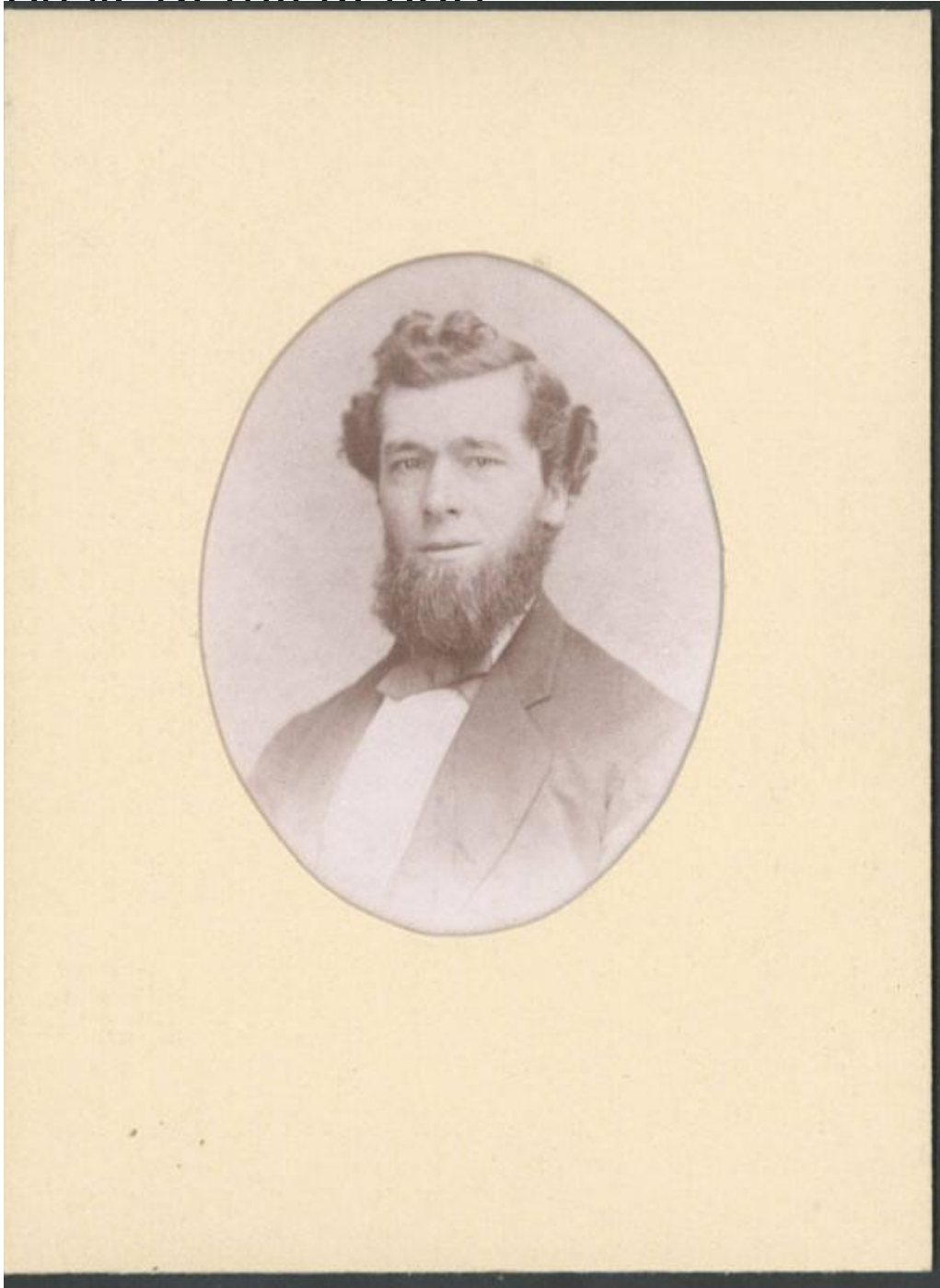


Basic Detail Report



**Title Caroline Matilda Harwood Swift and Matthew Swift in the year of
their marriage, 1871**

Date 1871

Primary Maker Unknown

Medium Photography; albumen prints on paper in cardboard mats

Basic Detail Report

Description Bust-length studio portraits of a man and a woman. The man has a beard. The woman wears a dress with a lace collar and earrings.

Dimensions Primary Dimensions (image height x width): 4 5/16 x 3 1/4in. (11 x 8.3 cm) Sheet (height x width): 7 3/16 x 5 1/4in. (18.3 x 13.3cm) Mount (height x width): 8 x 5 7/8in. (20.3 x 14.9cm)