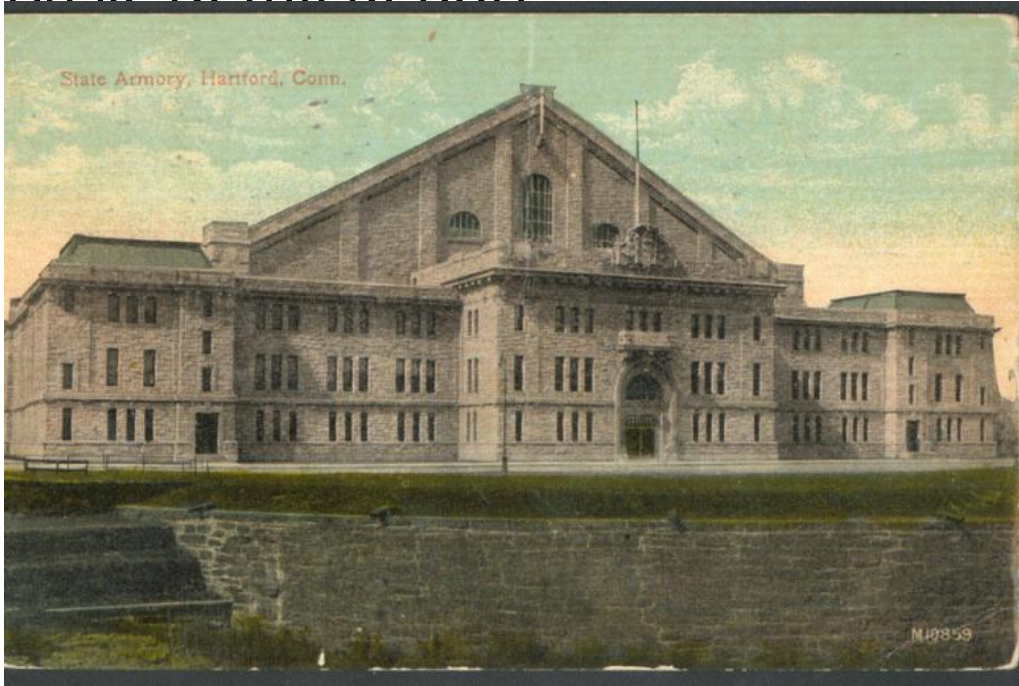


# Basic Detail Report



## Title Connecticut Armories

Date about 1910

Primary Maker Americhrome

Medium Photomechanical prints; colored printer's inks on postcards

Description Postcards depict the facades of the State Armory in Hartford and the armories in Bridgeport and Stamford. A flag flies over the entrance to the Stamford armory; an elm tree is in the foreground.

Dimensions Primary Dimensions (image height x width): 3 1/2 x 5 1/2in. (8.9 x 14cm) or smaller Sheet (height x width): 3 1/2 x 5 1/2in. (8.9 x 14cm)