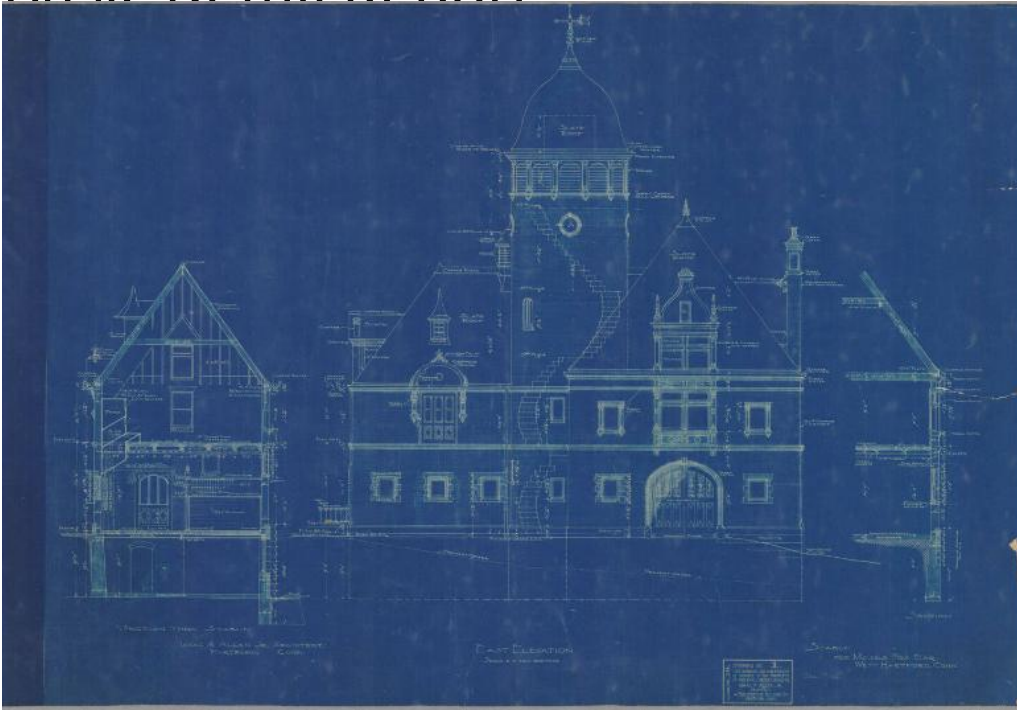


Basic Detail Report



Title Stable for Moses Fox Esq., West Hartford, Conn.

Date March 6, 1900

Primary Maker Isaac Almarin Allen Jr.

Medium Blueprints; cyanotypes on paper

Description Designs for an elaborate stable with Queen Anne elements include East Elevation, North Elevation, West Elevation, South Elevation, Cellar Plan, First Floor Plan, Second Floor Plan, and Roof Plan. Cellar Plan includes a vegetable cellar, tool room, and coal bin. First Floor Plan includes stalls, a water trough, carriage wash, and hay, feed, and straw shoots. Second Floor Plan includes a store room, hay loft, and a small apartment with a bedroom, living room, kitchen, pantry, man's room, bathroom, and closets. Roof Plan includes a water tank in the tower. Elevations show plans for a slate roof, copper finials, spiral staircase, weathervane, and wrought iron grills on the doors.

Dimensions Primary Dimensions (height x width): 24 x 36in. (61 x 91.4cm)