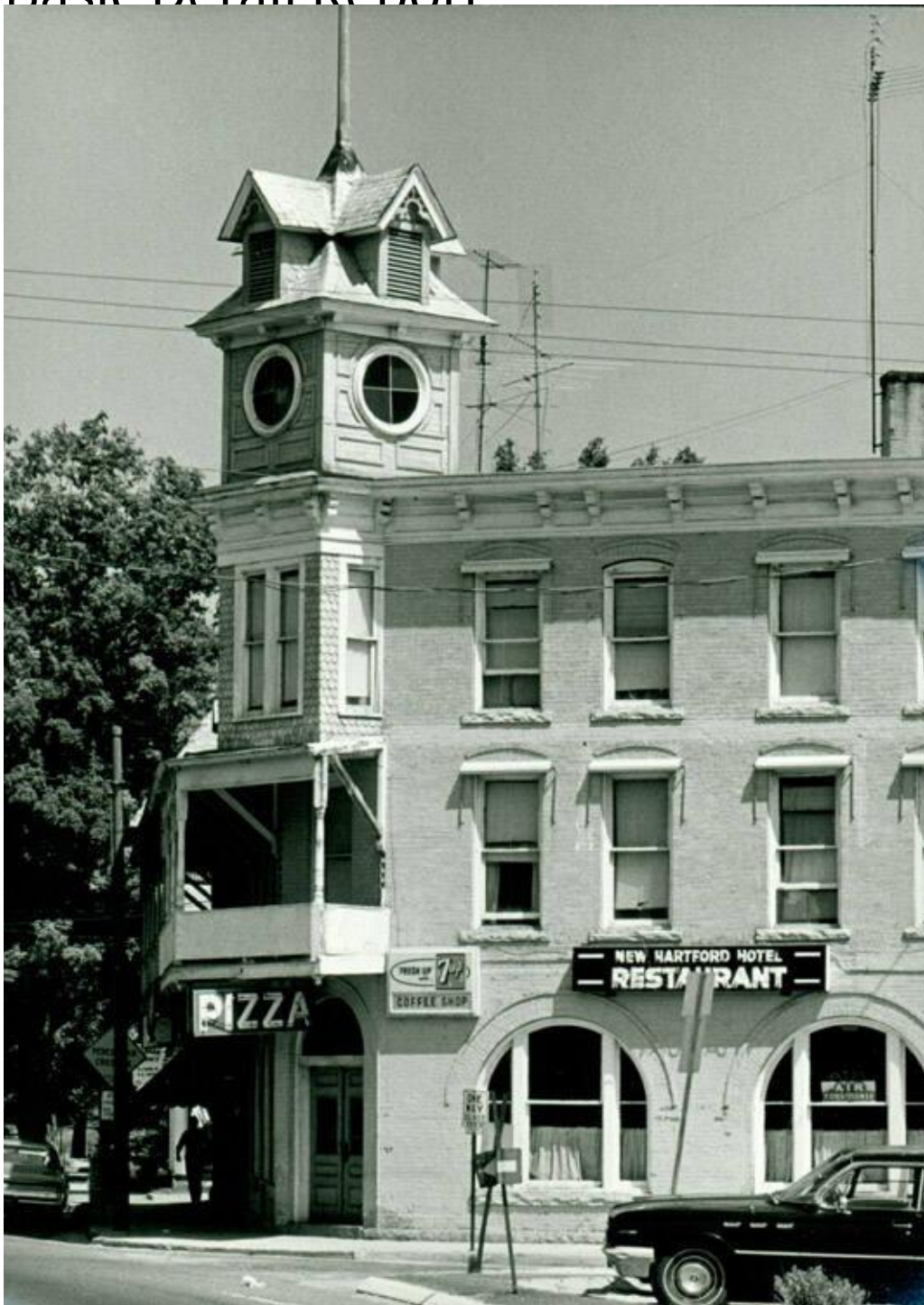


# Basic Detail Report



## Title Views of New Hartford

Date 1970

Primary Maker Unknown

Medium Photography; gelatin silver prints on paper

# Basic Detail Report

Description Commercial buildings, some with porches and dormers, line the

streets of large town. Signs read: "PIZZA" "NEW HARTFORD HOTEL /

RESTAURANT" "Village Shop / COMMUNITY HEALTH CENTER / HEALTH AIDS

GIFTS CARDS COSMETICS" "UNITED BANK & TRUST" "YE TOWN TUB" "PACKAGE

/ STORE." Merchandise is displayed in store windows. Utility poles and wires line

the streets. Automobiles and trucks are on the streets and parked by the curb. A

street sign reads: "15 MIN / PARKING." A frame house has louvered shutters and

awnings. Two American flags on flagpoles fly in front of the New Hartford Town

Hall. High, tree-covered hills are in the background of some photographs.

Dimensions Primary Dimensions (image height x width): 5 x 7in. (12.7 x 17.8cm)

Sheet (height x width): 5 x 7in. (12.7 x 17.8cm)