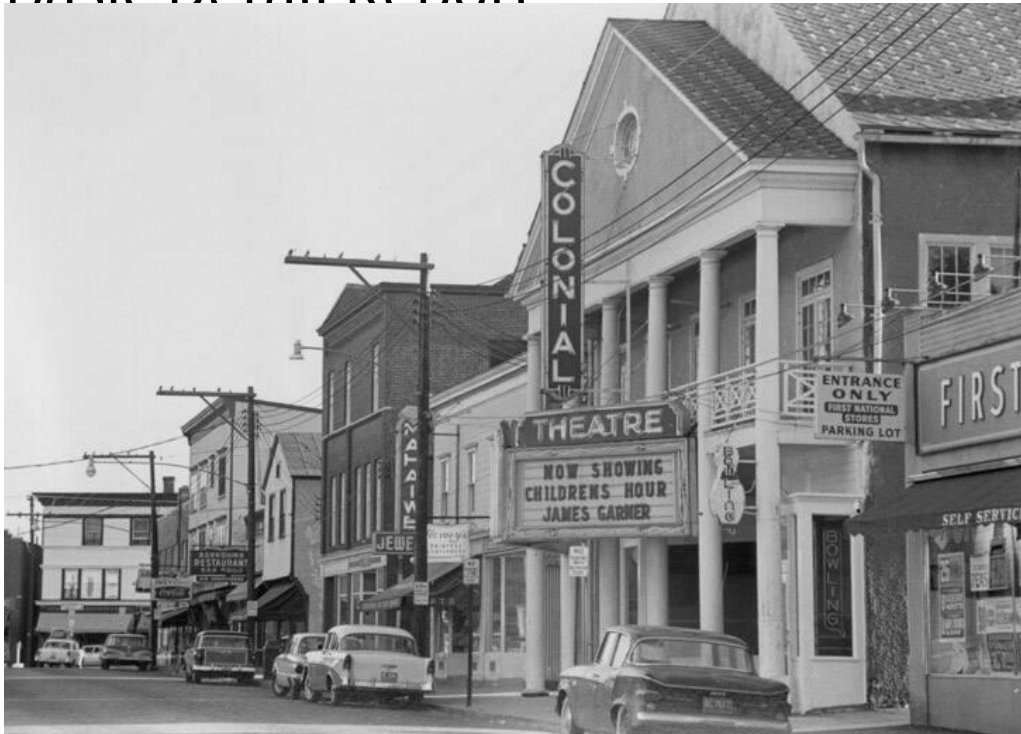


# Basic Detail Report



## Title Views of Canaan

Date 1962-1970

Primary Maker Unknown

Medium Photography; gelatin silver prints on paper

Description Commercial buildings line the main street of a small town. Signs read: "CHARLES / RESTAURANT / SEA FOOD" "DRUGS" "KAUTTU'S PHARMACY" "INCOME / TAX" "COLONIAL THEATRE" "NOW SHOWING / CHILDRENS HOUR / JAMES GARNER" "ENTRANCE ONLY / PARKING LOT" "CANAAN SAVINGS BANK" "LIGGETT / Rexall" "Sealtest / Ice Cream". Street signs read: "WEST / 44" "NORTH / 7" "RAILROAD / CROSSING" "60 MIN / PARALLEL / PARKING."

Automobiles are parked beside the sidewalks. Some photographs include trash cans and / or decorative plants in tubs. A motorcycle is in one photograph. One photograph shows the track side of the Canaan Railroad Station, with railroad tracks and a railroad crossing gate.

# Basic Detail Report

Dimensions Primary Dimensions (image height x width): 5 x 7in. (12.7 x 17.8cm)

or smaller Sheet (height x width): 5 x 7in. (12.7 x 17.8cm)