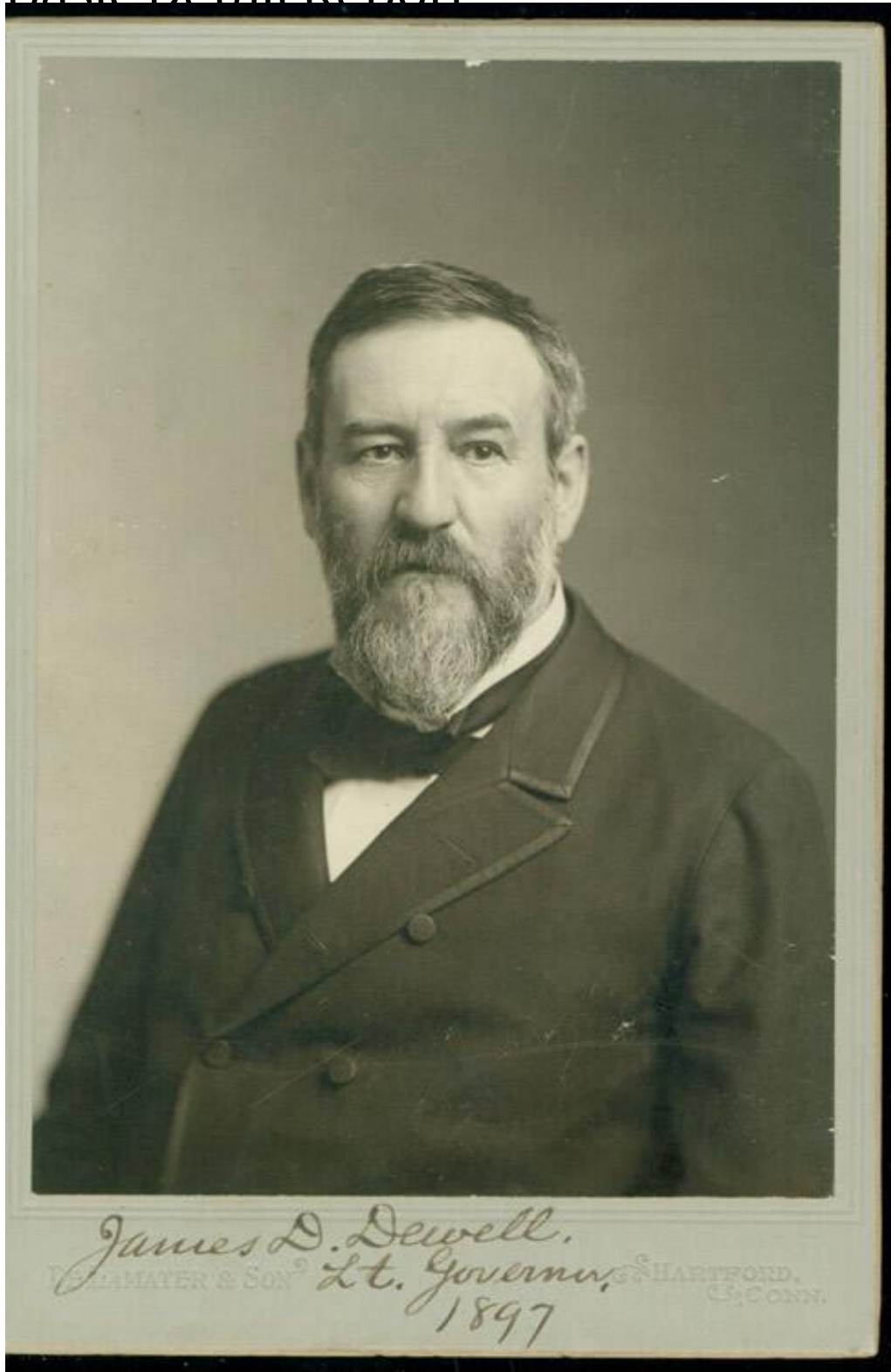


## Basic Detail Report



### Title Miscellaneous Portraits

Date 1876-1897

Primary Maker John W. Alderige

# Basic Detail Report

Medium Photography; albumen prints and platinum prints on paper on

cardboard cabinet cards

Description Bust-length studio portraits of middle-aged and elderly men. Some are bald, some have elaborate mustaches, beards, or sideburns. All wear coats, shirts, and neckties. One man has a pair of eyeglasses hanging from his pocket.

Subjects include G.M. Allen of Woodbury, John P. Barstow (?), William S.

Beecher, Charles Bennett of Westminster, S.G. Blakeman of Huntington, James

T. Brown, R.L. Bullard, John D. Candee, J.W. Carpenter, Jared Counise (?),

Lieutenant Governor James D. Dewell, G.H. Clark, Pastor Fenner B. Dickinson, M.

B. Fisk, E.S. Goodrich, E.O. Goodwin of East Hartford, Erastus Gay (or Guy),

William H. Hammond of Hampton, George M. Harrington, Joseph W. Jones of

Thomaston, M.F. Latham, Benjamin H. Lee, George E. Lounsbury, Donald Mann,

Joseph A. Rix, George E. Scofield of Greenwich, Charles G.R. Vinal, John L.

Wilcox, A.M. Wright, Charles E. Yale of Yalesville. Many were members of the

Connecticut legislature.

Dimensions Primary Dimensions (image height x width): 5 3/4 x 3 7/8in. (14.6 x

9.8cm) Sheet (height x width): 6 1/2 x 4 1/4in. (16.5 x 10.8cm)