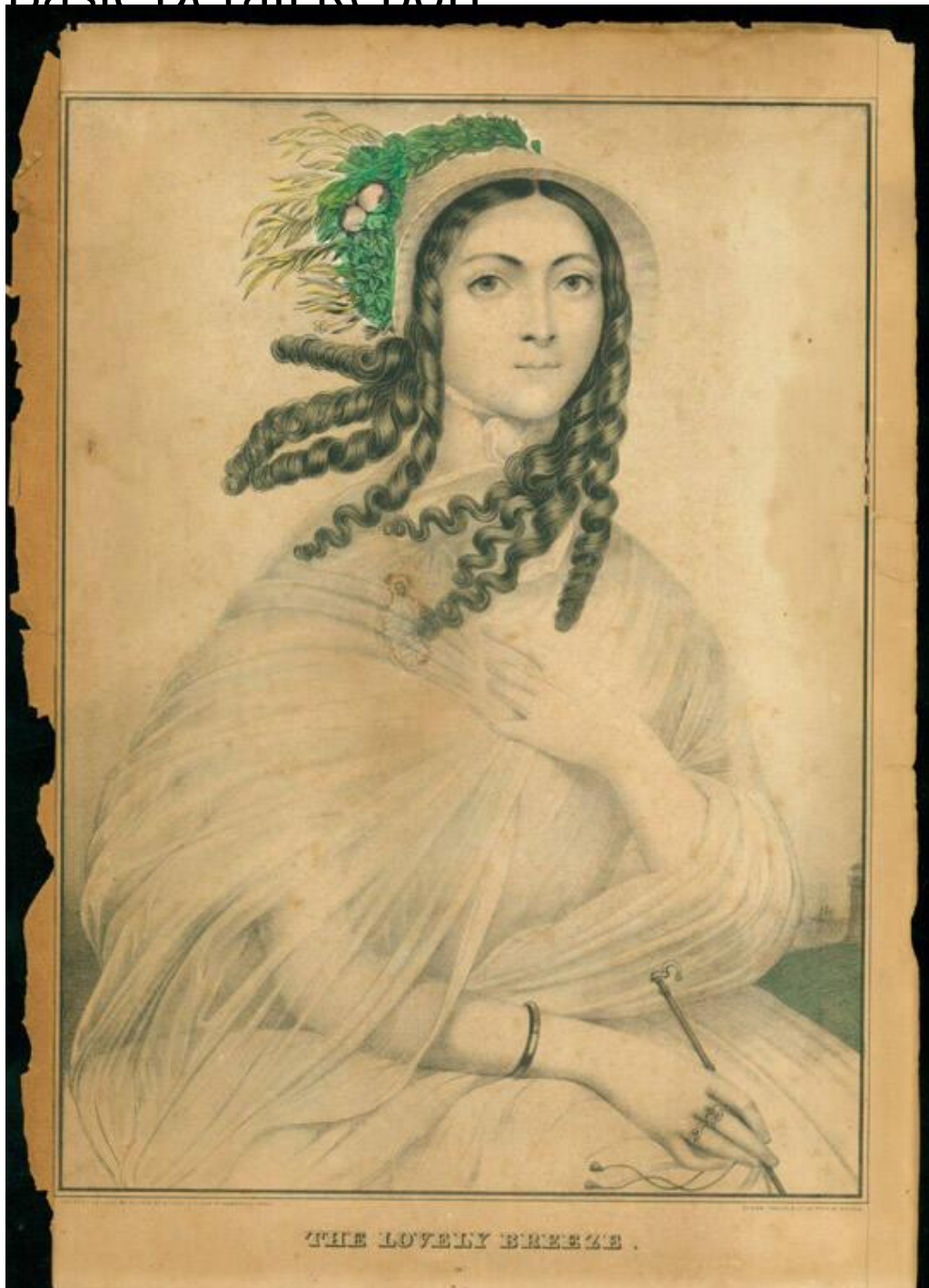


Basic Detail Report



Title The Lovely Breeze

Date 1852-1854

Primary Maker E.C. Kellogg & Co.

Medium Lithography; printer's ink on wove paper

Basic Detail Report

Description Three-quarter length portrait of a woman wearing a bonnet, dress, and shawl. Her shawl and her ringlet curls are blowing towards the left. Her right hand rests on the handle of a parasol; her left hand holds the shawl across her breast. A ship and a lighthouse are in the right background.

Dimensions Primary Dimensions (image height x width): 12 1/16 x 8 3/4in. (30.6 x 22.2cm) Sheet (height x width): 14 x 9 3/4in. (35.6 x 24.8cm)