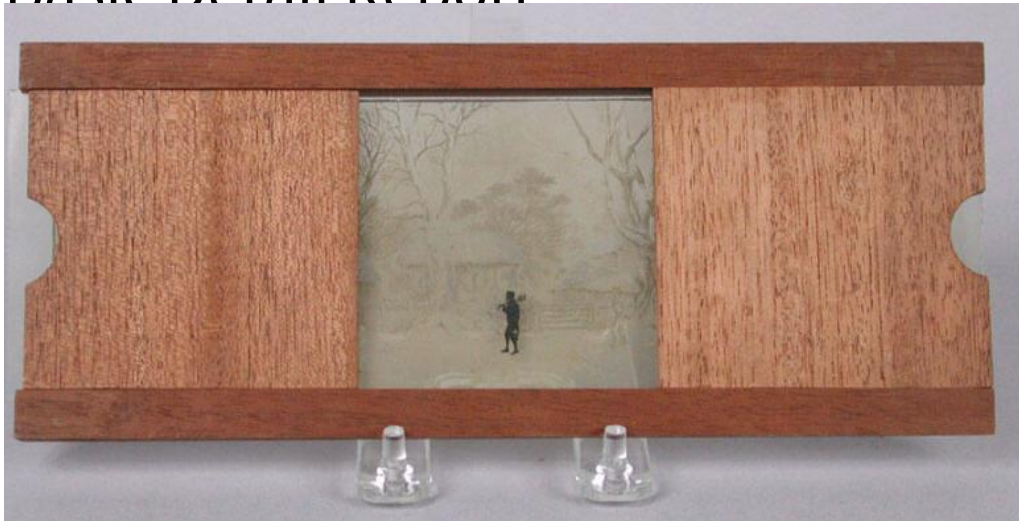


Basic Detail Report



Title Lantern Slide

Date 1850-1920

Primary Maker Unknown

Medium Wood, glass

Description An animated magic lantern slide in a wood frame. The rectangular wood frame has a square opening in the center with a piece of glass painted with a small figure of a man wearing a hat and carrying a shovel and a bucket. A secondary rectangular piece of glass is contact printed with a winter village scene. The scene from left to right has a Swiss style house with a backyard with a covered haystack, then at the far right is a stone cathedral style church building. There are several leafless trees and snow on the ground and on the buildings. When the secondary piece of glass is pulled from left to right the man on the square glass appears to be moving through the scene.

Dimensions Primary Dimensions (height x width x depth): 4 x 10 x 7/16in. (10.2 x 25.4 x 1.1cm)