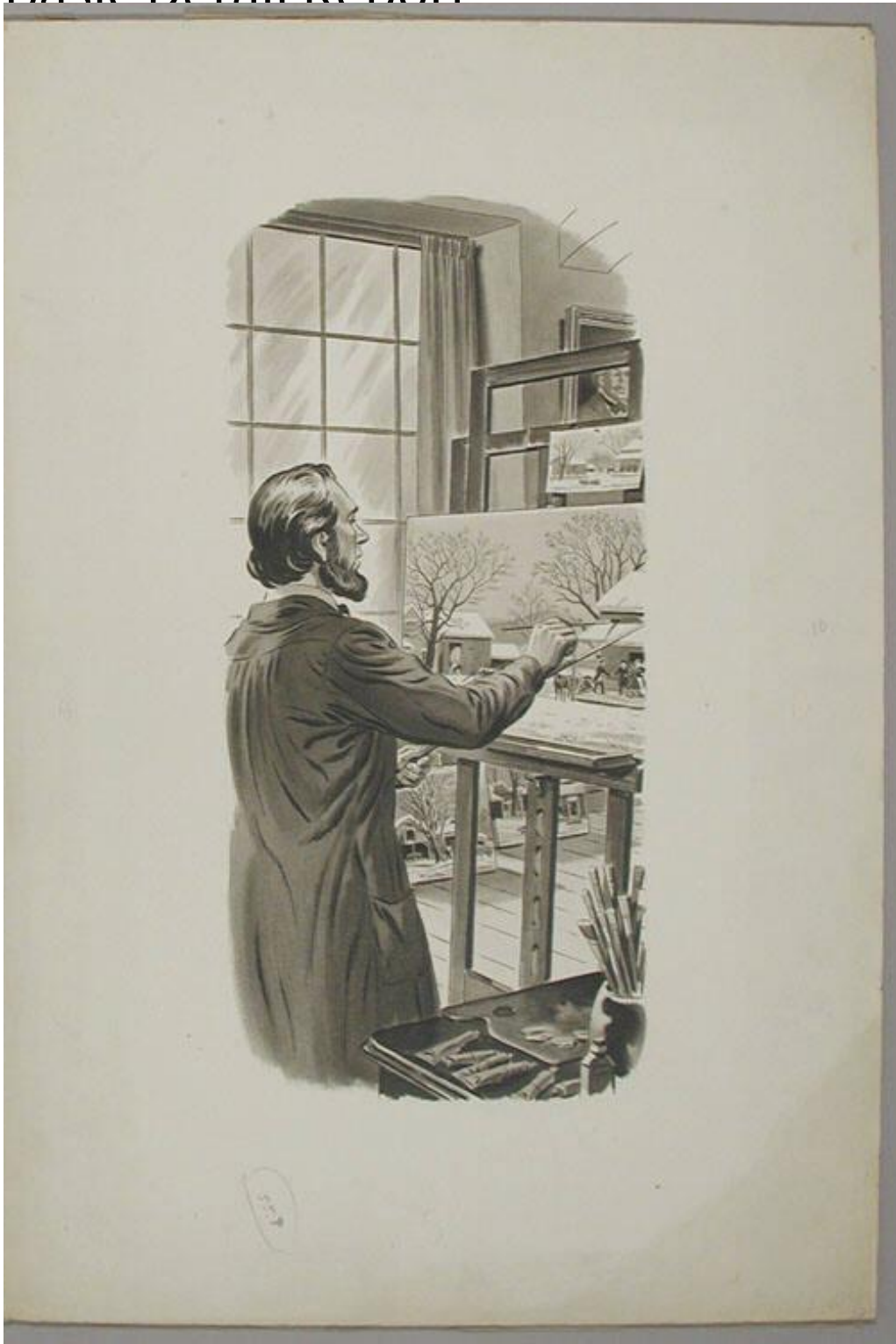


Basic Detail Report



Title George Durrie at his Easel

Date 1947

Primary Maker HH Art Studios Inc.

Basic Detail Report

Medium Drawing; ink and gouache with graphite on white wove paper mounted to board

Description Drawing of a bearded man meant to represent George H. Durrie standing and painting at an easel. The man wears a coat or smock, and is painting what appears to be a farm scene in winter. There are painting supplies on a table in the foreground, and other unframed paintings leaning against the wall. There is a window with curtains in the background.

Dimensions Primary Dimensions (height x width): 21 7/8 x 15in. (55.6 x 38.1cm)