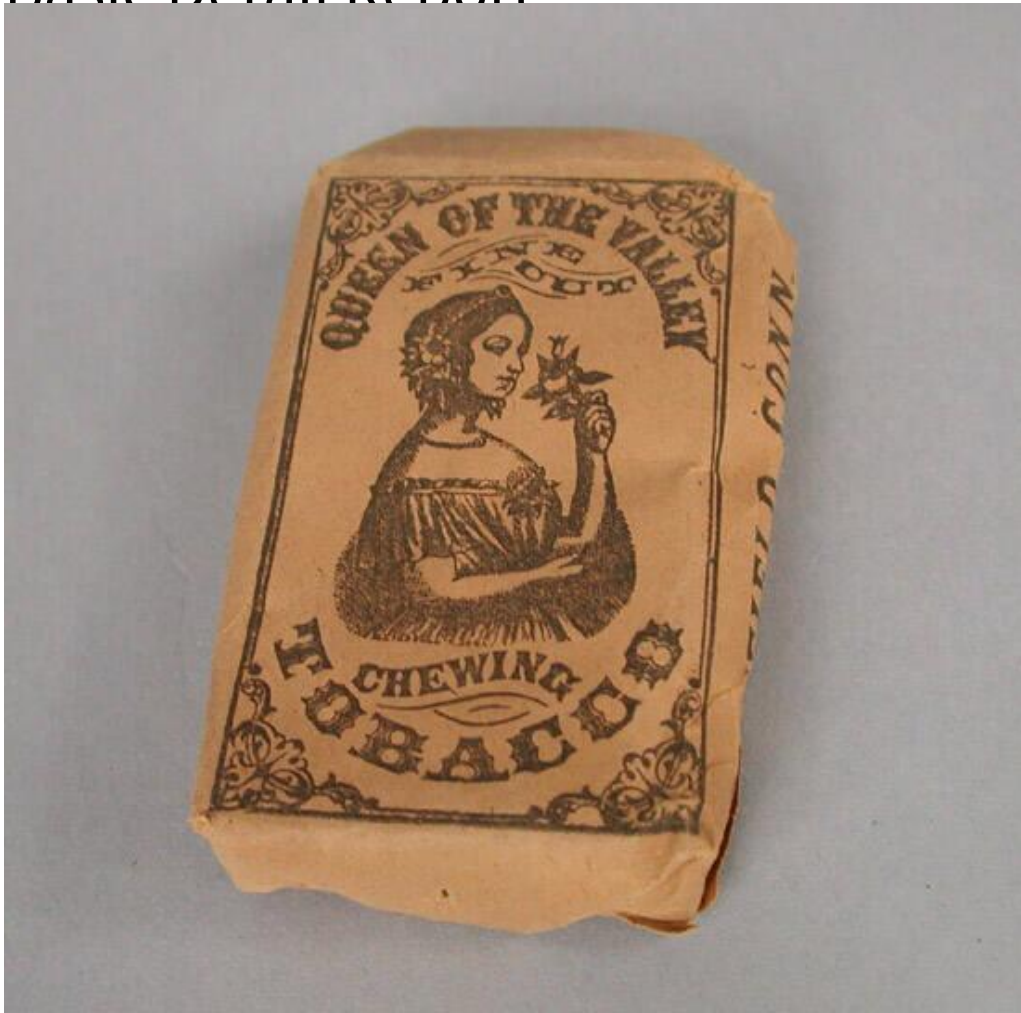


Basic Detail Report



Title Chewing Tobacco Packets

Date 1848-1859

Primary Maker G. Fox and Co.

Medium Paper, tobacco

Description Two rectangular paper chewing tobacco packets (.1) and (.2). The packets are virtually identical. Packet (.1) has a slightly pinker tone to the paper, and packet (.2) has a more yellow tone to the paper. Printed in black ink, the front of the packet has a picture of a woman with an off the shoulder dress and flowers in her hair. She is holding a flower in her left hand. The label reads, "QUEEN OF THE VALLEY / FINE / CUT / CHEWING / TOBACCO" Along one long

Basic Detail Report

edge the paper reads, "J. W. LOOMIS," and along the other long edge it reads,

"SUFFIELD, CONN." The back of the packets read, "This Tobacco is

Manufactured from / Selected Leaf, and Warranted free from / [all] deleterious

[sic] substances. / J. W. LOOMIS, / Suffield, Conn."

Dimensions Primary Dimensions (height x width x depth): 3 5/8 x 2 1/4 x 13/16in.

(9.2 x 5.7 x 2cm)