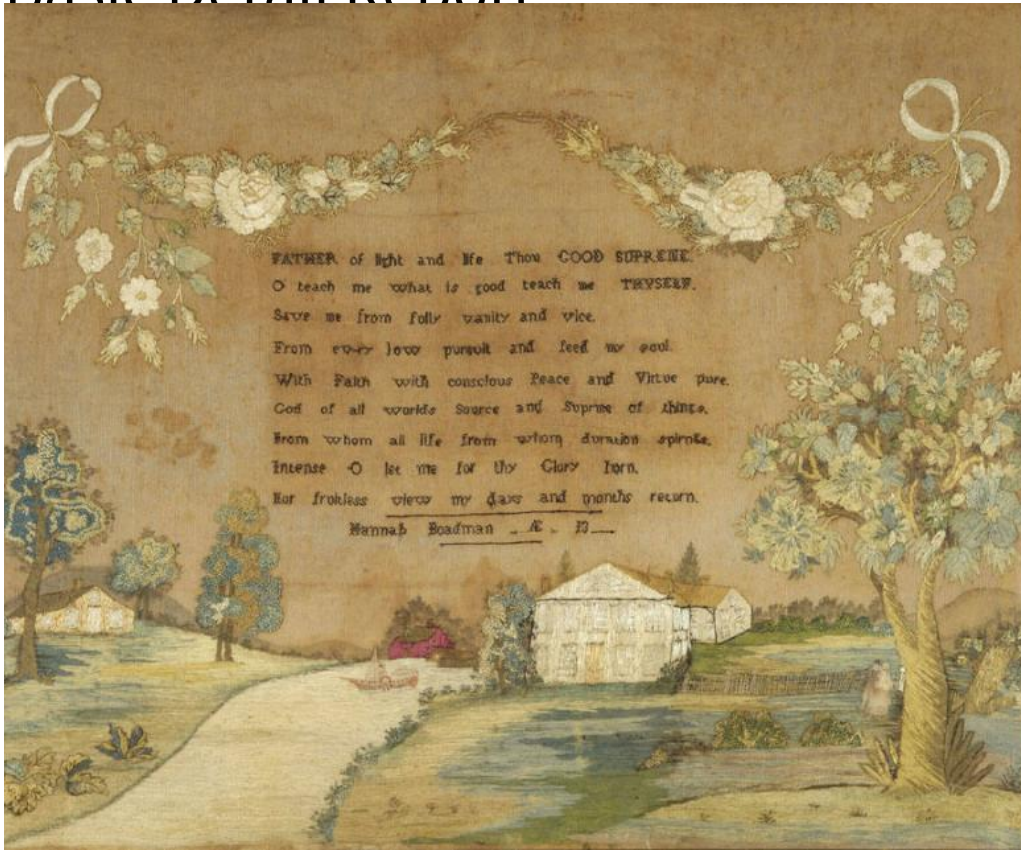


Basic Detail Report



Title Needlework Picture

Date 1820

Primary Maker Hannah Boardman

Medium Embroidery; floss, silk thread, chenille yarn, paper and paint on an undyed plain-woven cotton ground; glass, wood

Description Needlework picture worked in dark medium and light green, medium and light brown, medium and light blue, tan, khaki, white, red floss, black silk thread, blue, white and brown chenille yarn, and appliqué painted paper and paint on an undyed plain-woven cotton ground, using satin stitch and other stitches. The needlework picture is rectangular, oriented horizontally. It is laid out with flowers on a vine draped between two corner bow knots, over a religious verse, over an inscription, over a landscape at the bottom. The

Basic Detail Report

religious verse is "FATHER of light and life Thou GOOD SUPRENE [sic]/ O teach

me what is good teach me THYSELF./ Save me from folly vanity or vice./ From ev

ry [sic] low pursuit and feed my soul./ With Faith with conscious Peace and

virtue Pure./ God of all world's Source and Suprme [sic] of things./ From whom

all life from whom duration springs./ Intense O let me for thy glory horn./ Nor

fruitless view my days and months return./" The inscription is "Hannah

Boadman [sic] .. AE .. 13 ·····". The landscape shows a house and red barn on a

river. A steamboat, constructed of painted paper that is applied to the picture, is

on the river; the steamboat has a single mast, waterwheel, and tented area at

the back. To the right is a large tree with two applied paper figures below; the

figures are of a man and a woman. To the left is a building and tree on a hill. The

landscape and swagged floral vine on the needlework picture are worked with

floss. The religious verse is worked in silk thread. Small portions of the trees and

vegetation, as well as the background in the landscape are painted in dark paint

directly onto the ground. Stitches: The principal stitch on the needlework

picture is satin stitch; it also includes cross stitch (over one, for the religious

verse), outline, and some overlay work. Thread count: approximated 48 warp x

48 weft per inch. Condition: The needlework picture has moderate to significant

fading of the silk threads. The glass, frame and backing are replaced.

Dimensions Primary Dimensions (height x width of frame): 28 x 33 1/2in. (71.1 x

85.1cm)